

Anti-KLF12 Antibody
Rabbit polyclonal antibody to KLF12
Catalog # AP61025**Specification**

Anti-KLF12 Antibody - Product Information

Application	WB
Primary Accession	O9Y4X4
Other Accession	O35738
Reactivity	Human, Mouse, Rat
Host	Rabbit
Clonality	Polyclonal
Calculated MW	44240

Anti-KLF12 Antibody - Additional Information**Gene ID** 11278**Other Names**

AP2REP; Krueppel-like factor 12; Transcriptional repressor AP-2rep

Target/Specificity

KLH-conjugated synthetic peptide encompassing a sequence within the center region of human KLF12. The exact sequence is proprietary.

Dilution

WB~~WB (1/500 - 1/1000)

Format

Liquid in 0.42% Potassium phosphate, 0.87% Sodium chloride, pH 7.3, 30% glycerol, and 0.09% (W/V) sodium azide.

Storage

Store at -20 °C. Stable for 12 months from date of receipt

Anti-KLF12 Antibody - Protein Information**Name** KLF12**Synonyms** AP2REP**Function**

Confers strong transcriptional repression to the AP-2-alpha gene. Binds to a regulatory element (A32) in the AP-2-alpha gene promoter.

Cellular Location

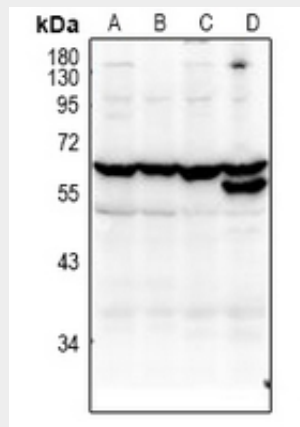
Nucleus.

Anti-KLF12 Antibody - Protocols

Provided below are standard protocols that you may find useful for product applications.

- [Western Blot](#)
- [Blocking Peptides](#)
- [Dot Blot](#)
- [Immunohistochemistry](#)
- [Immunofluorescence](#)
- [Immunoprecipitation](#)
- [Flow Cytometry](#)
- [Cell Culture](#)

Anti-KLF12 Antibody - Images



Western blot analysis of KLF12 expression in A549 (A), MCF7 (B), PC12 (C), CT26 (D) whole cell lysates.

Anti-KLF12 Antibody - Background

KLH-conjugated synthetic peptide encompassing a sequence within the center region of human KLF12. The exact sequence is proprietary.