

Anti-Contactin 1 Antibody
Rabbit polyclonal antibody to Contactin 1
Catalog # AP61029**Specification**

Anti-Contactin 1 Antibody - Product Information

Application	WB
Primary Accession	Q12860
Other Accession	P12960
Reactivity	Human, Mouse, Rat
Host	Rabbit
Clonality	Polyclonal
Calculated MW	113320

Anti-Contactin 1 Antibody - Additional Information**Gene ID** 1272**Other Names**

Contactin-1; Glycoprotein gp135; Neural cell surface protein F3

Target/Specificity

Recognizes endogenous levels of Contactin 1 protein.

Dilution

WB~~WB (1/500 - 1/1000)

Format

Liquid in 0.42% Potassium phosphate, 0.87% Sodium chloride, pH 7.3, 30% glycerol, and 0.09% (W/V) sodium azide.

Storage

Store at -20 °C.Stable for 12 months from date of receipt

Anti-Contactin 1 Antibody - Protein Information**Name** CNTN1**Function**

Contactins mediate cell surface interactions during nervous system development. Involved in the formation of paranodal axo-glia junctions in myelinated peripheral nerves and in the signaling between axons and myelinating glial cells via its association with CNTNAP1. Participates in oligodendrocytes generation by acting as a ligand of NOTCH1. Its association with NOTCH1 promotes NOTCH1 activation through the released notch intracellular domain (NICD) and subsequent translocation to the nucleus. Interaction with TNR induces a repulsion of neurons and an inhibition of neurite outgrowth (By similarity).

Cellular Location

[Isoform 1]: Cell membrane; Lipid-anchor, GPI- anchor; Extracellular side

Tissue Location

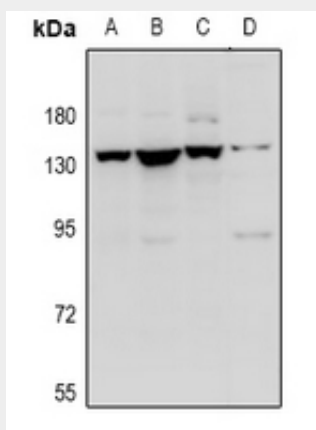
Strongly expressed in brain and in neuroblastoma and retinoblastoma cell lines. Lower levels of expression in lung, pancreas, kidney and skeletal muscle.

Anti-Contactin 1 Antibody - Protocols

Provided below are standard protocols that you may find useful for product applications.

- [Western Blot](#)
- [Blocking Peptides](#)
- [Dot Blot](#)
- [Immunohistochemistry](#)
- [Immunofluorescence](#)
- [Immunoprecipitation](#)
- [Flow Cytometry](#)
- [Cell Culture](#)

Anti-Contactin 1 Antibody - Images



Western blot analysis of Contactin 1 expression in A549 (A), HEK293T (B), C6 (C), MEF (D) whole cell lysates.

Anti-Contactin 1 Antibody - Background

KLH-conjugated synthetic peptide encompassing a sequence within the N-term region of human Contactin 1. The exact sequence is proprietary.