

Anti-EBP1 Antibody
Rabbit polyclonal antibody to EBP1
Catalog # AP61030**Specification**

Anti-EBP1 Antibody - Product Information

Application	WB
Primary Accession	O9UQ80
Other Accession	P50580
Reactivity	Human, Mouse
Host	Rabbit
Clonality	Polyclonal
Calculated MW	43787

Anti-EBP1 Antibody - Additional Information**Gene ID** 5036**Other Names**EBP1; Proliferation-associated protein 2G4; Cell cycle protein p38-2G4 homolog; hG4-1;
ErbB3-binding protein 1**Target/Specificity**

KLH-conjugated synthetic peptide encompassing a sequence within the center region of human EBP1. The exact sequence is proprietary.

Dilution

WB~~WB (1/500 - 1/1000)

Format

Liquid in 0.42% Potassium phosphate, 0.87% Sodium chloride, pH 7.3, 30% glycerol, and 0.09% (W/V) sodium azide.

Storage

Store at -20 °C. Stable for 12 months from date of receipt

Anti-EBP1 Antibody - Protein Information**Name** PA2G4**Synonyms** EBP1**Function**

May play a role in a ERBB3-regulated signal transduction pathway. Seems be involved in growth regulation. Acts a corepressor of the androgen receptor (AR) and is regulated by the ERBB3 ligand neuregulin-1/hereregulin (HRG). Inhibits transcription of some E2F1- regulated promoters, probably by recruiting histone acetylase (HAT) activity. Binds RNA. Associates with 28S, 18S and 5.8S mature rRNAs, several rRNA precursors and probably U3 small nucleolar RNA. May be involved in

regulation of intermediate and late steps of rRNA processing. May be involved in ribosome assembly. Mediates cap- independent translation of specific viral IRESs (internal ribosomal entry site) (By similarity). Regulates cell proliferation, differentiation, and survival. Isoform 1 suppresses apoptosis whereas isoform 2 promotes cell differentiation (By similarity).

Cellular Location

[Isoform 1]: Cytoplasm. Nucleus, nucleolus Note=Translocates to the nucleus upon treatment with HRG Phosphorylation at Ser-361 by PKC/PRKCD regulates its nucleolar localization.

Tissue Location

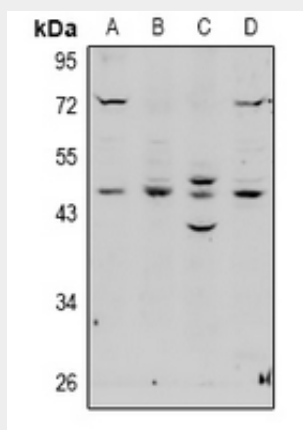
Isoform 2 is undetectable whereas isoform 1 is strongly expressed in cancer cells (at protein level). Isoform 1 and isoform 2 are widely expressed, including heart, brain, lung, pancreas, skeletal muscle, kidney, placenta and liver

Anti-EBP1 Antibody - Protocols

Provided below are standard protocols that you may find useful for product applications.

- [Western Blot](#)
- [Blocking Peptides](#)
- [Dot Blot](#)
- [Immunohistochemistry](#)
- [Immunofluorescence](#)
- [Immunoprecipitation](#)
- [Flow Cytometry](#)
- [Cell Culture](#)

Anti-EBP1 Antibody - Images



Western blot analysis of EBP1 expression in HepG2 (A), A549 (B), C6 (C), AML12 (D) whole cell lysates.

Anti-EBP1 Antibody - Background

KLH-conjugated synthetic peptide encompassing a sequence within the center region of human EBP1. The exact sequence is proprietary.