

Anti-Factor II Antibody
Rabbit polyclonal antibody to Factor II
Catalog # AP61033**Specification**

Anti-Factor II Antibody - Product Information

Application	WB, IH
Primary Accession	P00734
Other Accession	P19221
Reactivity	Human, Mouse, Rat
Host	Rabbit
Clonality	Polyclonal
Calculated MW	70037

Anti-Factor II Antibody - Additional Information**Gene ID** 2147**Other Names**

Prothrombin; Coagulation factor II

Target/Specificity

Recognizes endogenous levels of Factor II protein.

Dilution

WB~~WB (1/500 - 1/1000), IH (1/50 - 1/100)

IH~~WB (1/500 - 1/1000), IH (1/50 - 1/100)

Format

Liquid in 0.42% Potassium phosphate, 0.87% Sodium chloride, pH 7.3, 30% glycerol, and 0.09% (W/V) sodium azide.

Storage

Store at -20 °C. Stable for 12 months from date of receipt

Anti-Factor II Antibody - Protein Information**Name** F2**Function**

Thrombin, which cleaves bonds after Arg and Lys, converts fibrinogen to fibrin and activates factors V, VII, VIII, XIII, and, in complex with thrombomodulin, protein C. Functions in blood homeostasis, inflammation and wound healing.

Cellular Location

Secreted, extracellular space.

Tissue Location

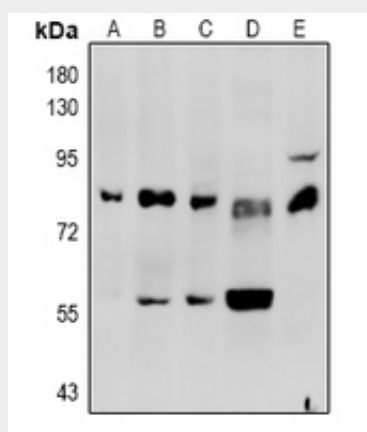
Expressed by the liver and secreted in plasma.

Anti-Factor II Antibody - Protocols

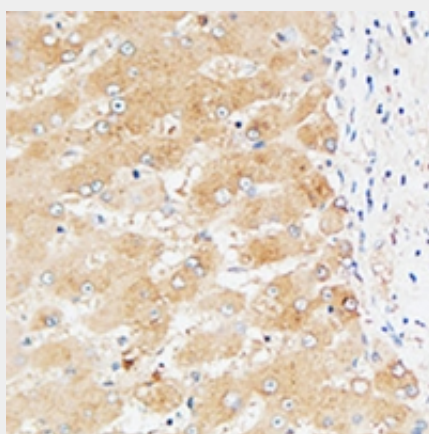
Provided below are standard protocols that you may find useful for product applications.

- [Western Blot](#)
- [Blocking Peptides](#)
- [Dot Blot](#)
- [Immunohistochemistry](#)
- [Immunofluorescence](#)
- [Immunoprecipitation](#)
- [Flow Cytometry](#)
- [Cell Culture](#)

Anti-Factor II Antibody - Images



Western blot analysis of Factor II expression in K562 (A), A549 (B), LO2 (C), rat liver (D), mouse liver (E) whole cell lysates.



Immunohistochemical analysis of Factor II staining in human liver formalin fixed paraffin embedded tissue section. The section was pre-treated using heat mediated antigen retrieval with sodium citrate buffer (pH 6.0). The section was then incubated with the antibody at room temperature and detected using an HRP conjugated compact polymer system. DAB was used as the chromogen. The section was then counterstained with haematoxylin and mounted with DPX.

Anti-Factor II Antibody - Background

KLH-conjugated synthetic peptide encompassing a sequence within the center region of human Factor II. The exact sequence is proprietary.