

Anti-Prolyl Endopeptidase Antibody
Rabbit polyclonal antibody to Prolyl Endopeptidase
Catalog # AP61037**Specification**

Anti-Prolyl Endopeptidase Antibody - Product Information

Application	WB, IHC
Primary Accession	Q8N6D4
Reactivity	Human
Host	Rabbit
Clonality	Polyclonal

Anti-Prolyl Endopeptidase Antibody - Additional Information**Other Names**

Prolyl endopeptidase; PREP; PE; Post-proline cleaving enzyme; PEP

Target/Specificity

Recognizes endogenous levels of Prolyl Endopeptidase protein.

Dilution

WB~~WB (1/500 - 1/1000), IH (1/50 - 1/100)

IHC~~1:100~500

Format

Liquid in 0.42% Potassium phosphate, 0.87% Sodium chloride, pH 7.3, 30% glycerol, and 0.09% (W/V) sodium azide.

Storage

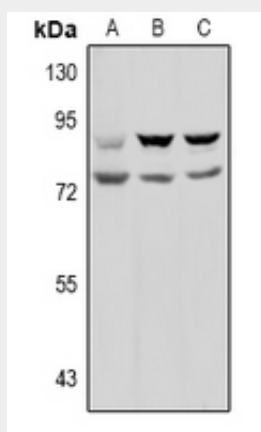
Store at -20 °C. Stable for 12 months from date of receipt

Anti-Prolyl Endopeptidase Antibody - Protein Information**Anti-Prolyl Endopeptidase Antibody - Protocols**

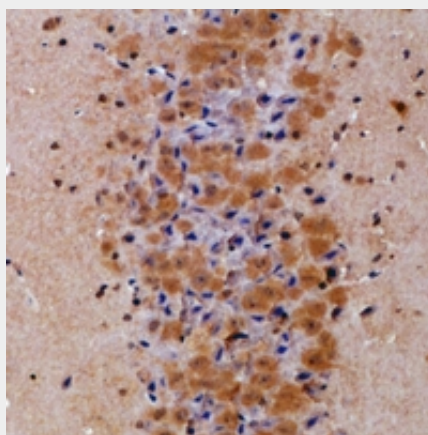
Provided below are standard protocols that you may find useful for product applications.

- [Western Blot](#)
- [Blocking Peptides](#)
- [Dot Blot](#)
- [Immunohistochemistry](#)
- [Immunofluorescence](#)
- [Immunoprecipitation](#)
- [Flow Cytometry](#)
- [Cell Culture](#)

Anti-Prolyl Endopeptidase Antibody - Images



Western blot analysis of Prolyl Endopeptidase expression in HEK293T (A), U87MG (B), MCF7 (C) whole cell lysates.



Immunohistochemical analysis of Prolyl Endopeptidase staining in mouse brain formalin fixed paraffin embedded tissue section. The section was pre-treated using heat mediated antigen retrieval with sodium citrate buffer (pH 6.0). The section was then incubated with the antibody at room temperature and detected using an HRP conjugated compact polymer system. DAB was used as the chromogen. The section was then counterstained with haematoxylin and mounted with DPX.

Anti-Prolyl Endopeptidase Antibody - Background

KLH-conjugated synthetic peptide encompassing a sequence within the N-term region of human Prolyl Endopeptidase. The exact sequence is proprietary.