

Anti-CD97 alpha Antibody
Rabbit polyclonal antibody to CD97 alpha
Catalog # AP61041**Specification**

Anti-CD97 alpha Antibody - Product Information

Application	WB
Primary Accession	P48960
Reactivity	Human, Rat
Host	Rabbit
Clonality	Polyclonal
Calculated MW	91869

Anti-CD97 alpha Antibody - Additional Information**Gene ID** 976**Other Names**

CD97 antigen; Leukocyte antigen CD97; CD97

Target/Specificity

Recognizes endogenous levels of CD97 alpha protein.

Dilution

WB~~WB (1/500 - 1/1000)

Format

Liquid in 0.42% Potassium phosphate, 0.87% Sodium chloride, pH 7.3, 30% glycerol, and 0.09% (W/V) sodium azide.

Storage

Store at -20 °C.Stable for 12 months from date of receipt

Anti-CD97 alpha Antibody - Protein Information**Name** ADGRE5 ([HGNC:1711](#))**Function**

Receptor potentially involved in both adhesion and signaling processes early after leukocyte activation. Plays an essential role in leukocyte migration.

Cellular Location

Cell membrane {ECO:0000250|UniProtKB:Q9Z0M6}; Multi-pass membrane protein

Tissue Location

Broadly expressed, found on most hematopoietic cells, including activated lymphocytes, monocytes, macrophages, dendritic cells, and granulocytes. Expressed also abundantly by smooth muscle cells. Expressed in thyroid, colorectal, gastric, esophageal and pancreatic carcinomas too.

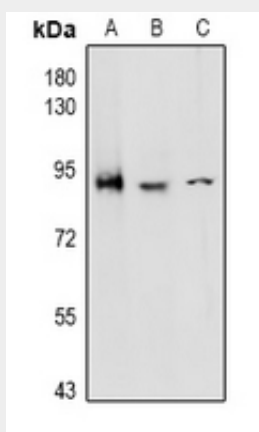
Expression are increased under inflammatory conditions in the CNS of multiple sclerosis and in synovial tissue of patients with rheumatoid arthritis. Increased expression of CD97 in the synovium is accompanied by detectable levels of soluble CD97 in the synovial fluid

Anti-CD97 alpha Antibody - Protocols

Provided below are standard protocols that you may find useful for product applications.

- [Western Blot](#)
- [Blocking Peptides](#)
- [Dot Blot](#)
- [Immunohistochemistry](#)
- [Immunofluorescence](#)
- [Immunoprecipitation](#)
- [Flow Cytometry](#)
- [Cell Culture](#)

Anti-CD97 alpha Antibody - Images



Western blot analysis of CD97 alpha expression in Jurkat (A), HCT116 (B), H9C2 (C) whole cell lysates.

Anti-CD97 alpha Antibody - Background

KLH-conjugated synthetic peptide encompassing a sequence within the center region of human CD97 alpha. The exact sequence is proprietary.