

**Anti-Plasminogen HC A Antibody**  
**Rabbit polyclonal antibody to Plasminogen HC A**  
**Catalog # AP61045****Specification**

---

**Anti-Plasminogen HC A Antibody - Product Information**

Application	WB
Primary Accession	<a href="#">P00747</a>
Other Accession	<a href="#">P20918</a>
Reactivity	Human, Mouse, Rat
Host	Rabbit
Clonality	Polyclonal
Calculated MW	90569

**Anti-Plasminogen HC A Antibody - Additional Information****Gene ID** 5340**Other Names**

Plasminogen

**Target/Specificity**

KLH-conjugated synthetic peptide encompassing a sequence within the N-term region of human Plasminogen HC A. The exact sequence is proprietary.

**Dilution**

WB~~WB (1/500 - 1/1000)

**Format**

Liquid in 0.42% Potassium phosphate, 0.87% Sodium chloride, pH 7.3, 30% glycerol, and 0.09% (W/V) sodium azide.

**Storage**

Store at -20 °C. Stable for 12 months from date of receipt

**Anti-Plasminogen HC A Antibody - Protein Information****Name** PLG**Function**

Plasmin dissolves the fibrin of blood clots and acts as a proteolytic factor in a variety of other processes including embryonic development, tissue remodeling, tumor invasion, and inflammation. In ovulation, weakens the walls of the Graafian follicle. It activates the urokinase-type plasminogen activator, collagenases and several complement zymogens, such as C1, C4 and C5 (PubMed: <http://www.uniprot.org/citations/6447255> target="\_blank">6447255</a>). Cleavage of fibronectin and laminin leads to cell detachment and apoptosis. Also cleaves fibrin, thrombospondin and von Willebrand factor. Its role in tissue remodeling and tumor invasion may be modulated by CSPG4. Binds to cells.

**Cellular Location**

Secreted. Note=Locates to the cell surface where it is proteolytically cleaved to produce the active plasmin. Interaction with HRG tethers it to the cell surface

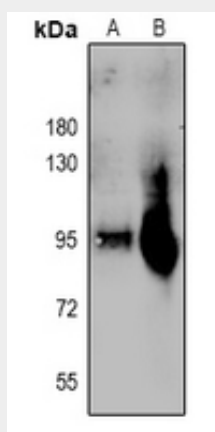
**Tissue Location**

Present in plasma and many other extracellular fluids. It is synthesized in the liver

**Anti-Plasminogen HC A Antibody - Protocols**

Provided below are standard protocols that you may find useful for product applications.

- [Western Blot](#)
- [Blocking Peptides](#)
- [Dot Blot](#)
- [Immunohistochemistry](#)
- [Immunofluorescence](#)
- [Immunoprecipitation](#)
- [Flow Cytometry](#)
- [Cell Culture](#)

**Anti-Plasminogen HC A Antibody - Images**

Western blot analysis of Plasminogen HC A expression in PC12 (A), CT26 (B) whole cell lysates.

**Anti-Plasminogen HC A Antibody - Background**

KLH-conjugated synthetic peptide encompassing a sequence within the N-term region of human Plasminogen HC A. The exact sequence is proprietary.