

**Anti-MRGX4 Antibody**  
**Rabbit polyclonal antibody to MRGX4**  
**Catalog # AP61051****Specification**

---

**Anti-MRGX4 Antibody - Product Information**

Application	WB, IF/IC
Primary Accession	<a href="#">O96LA9</a>
Reactivity	Human, Mouse, Rat
Host	Rabbit
Clonality	Polyclonal
Calculated MW	36461

**Anti-MRGX4 Antibody - Additional Information****Gene ID** 117196**Other Names**

MRGX4; SNSR5; SNSR6; Mas-related G-protein coupled receptor member X4; Sensory neuron-specific G-protein coupled receptor 5/6

**Target/Specificity**

Recognizes endogenous levels of MRGX4 protein.

**Dilution**WB~~WB (1/500 - 1/1000), IF/IC (1/100 - 1/500)  
IF/IC~~N/A**Format**

Liquid in 0.42% Potassium phosphate, 0.87% Sodium chloride, pH 7.3, 30% glycerol, and 0.09% (W/V) sodium azide.

**Storage**

Store at -20 °C. Stable for 12 months from date of receipt

**Anti-MRGX4 Antibody - Protein Information****Name** MRGPRX4**Synonyms** MRGX4, SNSR5, SNSR6**Function**

Orphan receptor. Probably involved in the function of nociceptive neurons. May regulate nociceptor function and/or development, including the sensation or modulation of pain. Potently activated by enkephalins (By similarity).

**Cellular Location**

Cell membrane; Multi-pass membrane protein.

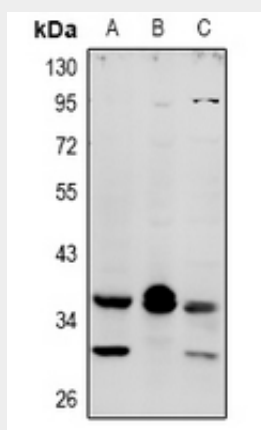
**Tissue Location**

Uniquely localized in a subset of small dorsal root and trigeminal sensory neurons.

**Anti-MRGX4 Antibody - Protocols**

Provided below are standard protocols that you may find useful for product applications.

- [Western Blot](#)
- [Blocking Peptides](#)
- [Dot Blot](#)
- [Immunohistochemistry](#)
- [Immunofluorescence](#)
- [Immunoprecipitation](#)
- [Flow Cytometry](#)
- [Cell Culture](#)

**Anti-MRGX4 Antibody - Images**

Western blot analysis of MRGX4 expression in U87MG (A), C6 (B), MCF7 (C) whole cell lysates.



Immunofluorescent analysis of MRGX4 staining in A549 cells. Formalin-fixed cells were permeabilized with 0.1% Triton X-100 in TBS for 5-10 minutes and blocked with 3% BSA-PBS for 30 minutes at room temperature. Cells were probed with the primary antibody in 3% BSA-PBS and incubated overnight at 4 °C in a humidified chamber. Cells were washed with PBST and incubated with Alexa Fluor 647-conjugated secondary antibody (red) in PBS at room temperature in the dark.

**Anti-MRGX4 Antibody - Background**

KLH-conjugated synthetic peptide encompassing a sequence within the C-term region of human MRGX4. The exact sequence is proprietary.