

Anti-PDGFC Antibody
Rabbit polyclonal antibody to PDGFC
Catalog # AP61053**Specification**

Anti-PDGFC Antibody - Product Information

Application	WB, IHC
Primary Accession	O9NRA1
Other Accession	O8CI19
Reactivity	Human, Mouse
Host	Rabbit
Clonality	Polyclonal
Calculated MW	39029

Anti-PDGFC Antibody - Additional Information**Gene ID** 56034**Other Names**

SCDGF; Platelet-derived growth factor C; PDGF-C; Fallotein; Spinal cord-derived growth factor; SCDGF; VEGF-E

Target/Specificity

KLH-conjugated synthetic peptide encompassing a sequence within the center region of human PDGFC. The exact sequence is proprietary.

Dilution

WB~~WB (1/500 - 1/1000), IH (1/50 - 1/100)

IHC~~1:100~500

Format

Liquid in 0.42% Potassium phosphate, 0.87% Sodium chloride, pH 7.3, 30% glycerol, and 0.09% (W/V) sodium azide.

Storage

Store at -20 °C. Stable for 12 months from date of receipt

Anti-PDGFC Antibody - Protein Information**Name** PDGFC**Synonyms** SCDGF**Function**

Growth factor that plays an essential role in the regulation of embryonic development, cell proliferation, cell migration, survival and chemotaxis. Potent mitogen and chemoattractant for cells of mesenchymal origin. Required for normal skeleton formation during embryonic development, especially for normal development of the craniofacial skeleton and for normal

development of the palate. Required for normal skin morphogenesis during embryonic development. Plays an important role in wound healing, where it appears to be involved in three stages: inflammation, proliferation and remodeling. Plays an important role in angiogenesis and blood vessel development. Involved in fibrotic processes, in which transformation of interstitial fibroblasts into myofibroblasts plus collagen deposition occurs. The CUB domain has mitogenic activity in coronary artery smooth muscle cells, suggesting a role beyond the maintenance of the latency of the PDGF domain. In the nucleus, PDGFC seems to have additional function.

Cellular Location

Cytoplasm, cytosol. Secreted. Nucleus. Cytoplasmic granule. Cell membrane. Note=Sumoylated form is predominant in the nucleus (PubMed:15247255). Stored in alpha granules in platelets (PubMed:15061151).

Tissue Location

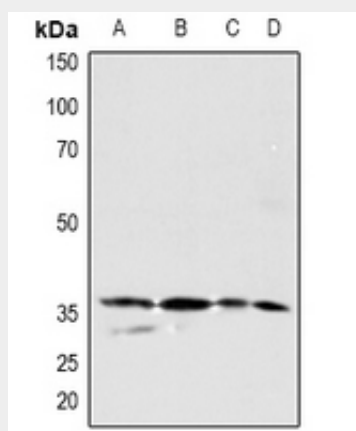
Expressed in the fallopian tube, vascular smooth muscle cells in kidney, breast and colon and in visceral smooth muscle of the gastrointestinal tract. Highly expressed in retinal pigment epithelia. Expressed in medulloblastoma. In the kidney, constitutively expressed in parietal epithelial cells of Bowman's capsule, tubular epithelial cells and in arterial endothelial cells (at protein level) Highly expressed in the platelets, prostate, testis and uterus. Higher expression is observed in uterine leiomyomata. Weaker expression in the spleen, thymus, heart, pancreas, liver, ovary cells and small intestine, and negligible expression in the colon and peripheral blood leukocytes.

Anti-PDGFC Antibody - Protocols

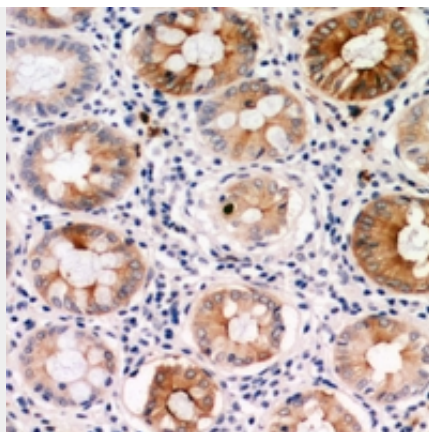
Provided below are standard protocols that you may find useful for product applications.

- [Western Blot](#)
- [Blocking Peptides](#)
- [Dot Blot](#)
- [Immunohistochemistry](#)
- [Immunofluorescence](#)
- [Immunoprecipitation](#)
- [Flow Cytometry](#)
- [Cell Culture](#)

Anti-PDGFC Antibody - Images



Western blot analysis of PDGFC expression in A549 (A), U87MG (B), mouse kidney (C), mouse muscle (D) whole cell lysates.



Immunohistochemical analysis of PDGFC staining in human colon cancer formalin fixed paraffin embedded tissue section. The section was pre-treated using heat mediated antigen retrieval with sodium citrate buffer (pH 6.0). The section was then incubated with the antibody at room temperature and detected using an HRP conjugated compact polymer system. DAB was used as the chromogen. The section was then counterstained with haematoxylin and mounted with DPX.

Anti-PDGFC Antibody - Background

KLH-conjugated synthetic peptide encompassing a sequence within the center region of human PDGFC. The exact sequence is proprietary.