

Anti-NAIP Antibody
Rabbit polyclonal antibody to NAIP
Catalog # AP61054**Specification**

Anti-NAIP Antibody - Product Information

Application	WB
Primary Accession	Q13075
Reactivity	Human, Mouse
Host	Rabbit
Clonality	Polyclonal
Calculated MW	159582

Anti-NAIP Antibody - Additional Information**Gene ID** 4671**Other Names**

BIRC1; Baculoviral IAP repeat-containing protein 1; Neuronal apoptosis inhibitory protein

Target/Specificity

Recognizes endogenous levels of NAIP protein.

Dilution

WB~~WB (1/500 - 1/1000)

Format

Liquid in 0.42% Potassium phosphate, 0.87% Sodium chloride, pH 7.3, 30% glycerol, and 0.09% (W/V) sodium azide.

Storage

Store at -20 °C.Stable for 12 months from date of receipt

Anti-NAIP Antibody - Protein Information**Name** NAIP**Synonyms** BIRC1**Function**

Anti-apoptotic protein which acts by inhibiting the activities of CASP3, CASP7 and CASP9. Can inhibit the autocleavage of pro-CASP9 and cleavage of pro-CASP3 by CASP9. Capable of inhibiting CASP9 autoproteolysis at 'Asp-315' and decreasing the rate of auto proteolysis at 'Asp-330'. Acts as a mediator of neuronal survival in pathological conditions. Prevents motor-neuron apoptosis induced by a variety of signals. Possible role in the prevention of spinal muscular atrophy that seems to be caused by inappropriate persistence of motor- neuron apoptosis: mutated or deleted forms of NAIP have been found in individuals with severe spinal muscular atrophy.

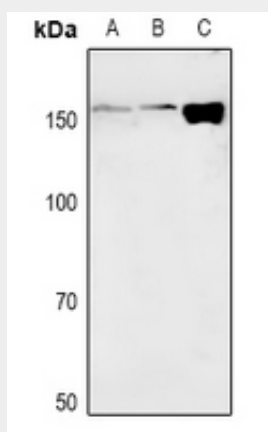
Tissue Location

Expressed in motor neurons, but not in sensory neurons. Found in liver and placenta, and to a lesser extent in spinal cord

Anti-NAIP Antibody - Protocols

Provided below are standard protocols that you may find useful for product applications.

- [Western Blot](#)
- [Blocking Peptides](#)
- [Dot Blot](#)
- [Immunohistochemistry](#)
- [Immunofluorescence](#)
- [Immunoprecipitation](#)
- [Flow Cytometry](#)
- [Cell Culture](#)

Anti-NAIP Antibody - Images

Western blot analysis of NAIP expression in HEK293T (A), SGC7901 (B), Raw264.7 (C) whole cell lysates.

Anti-NAIP Antibody - Background

KLH-conjugated synthetic peptide encompassing a sequence within the C-term region of human NAIP. The exact sequence is proprietary.