

**Anti-CRK (pY221) Antibody**  
**Rabbit polyclonal antibody to CRK (pY221)**  
**Catalog # AP61062****Specification**

---

**Anti-CRK (pY221) Antibody - Product Information**

Application	WB, IF/IC
Primary Accession	<a href="#">P46108</a>
Other Accession	<a href="#">Q64010</a>
Reactivity	Human, Mouse, Rat
Host	Rabbit
Clonality	Polyclonal
Calculated MW	33831

**Anti-CRK (pY221) Antibody - Additional Information****Gene ID** 1398**Other Names**

Adapter molecule crk; Proto-oncogene c-Crk; p38

**Target/Specificity**

KLH-conjugated synthetic peptide encompassing a sequence within the center region of human CRK. The exact sequence is proprietary.

**Dilution**

WB~~WB (1/500 - 1/1000), IF/IC (1/100 - 1/500)

IF/IC~~N/A

**Format**

Liquid in 0.42% Potassium phosphate, 0.87% Sodium chloride, pH 7.3, 30% glycerol, and 0.09% (W/V) sodium azide.

**Storage**

Store at -20 °C. Stable for 12 months from date of receipt

**Anti-CRK (pY221) Antibody - Protein Information****Name** CRK**Function**

Involved in cell branching and adhesion mediated by BCAR1- CRK-RAPGEF1 signaling and activation of RAP1.

**Cellular Location**

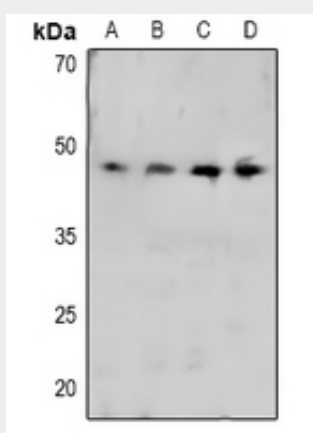
Cytoplasm. Cell membrane. Note=Translocated to the plasma membrane upon cell adhesion.

## Anti-CRK (pY221) Antibody - Protocols

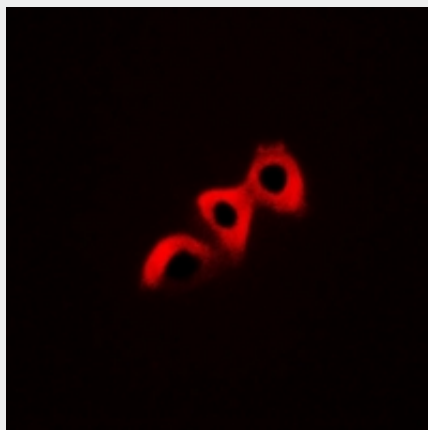
Provided below are standard protocols that you may find useful for product applications.

- [Western Blot](#)
- [Blocking Peptides](#)
- [Dot Blot](#)
- [Immunohistochemistry](#)
- [Immunofluorescence](#)
- [Immunoprecipitation](#)
- [Flow Cytometry](#)
- [Cell Culture](#)

## Anti-CRK (pY221) Antibody - Images



Western blot analysis of CRK (pY221) expression in Hela (A), THP1 (B), mouse liver (C), rat liver (D) whole cell lysates.



Immunofluorescent analysis of CRK (pY221) staining in HuvEc cells. Formalin-fixed cells were permeabilized with 0.1% Triton X-100 in TBS for 5-10 minutes and blocked with 3% BSA-PBS for 30 minutes at room temperature. Cells were probed with the primary antibody in 3% BSA-PBS and incubated overnight at 4 °C in a humidified chamber. Cells were washed with PBST and incubated with Alexa Fluor 647-conjugated secondary antibody (red) in PBS at room temperature in the dark.

## Anti-CRK (pY221) Antibody - Background

KLH-conjugated synthetic peptide encompassing a sequence within the center region of human CRK. The exact sequence is proprietary.