

Anti-C/EBP epsilon (pT74) Antibody
Rabbit polyclonal antibody to C/EBP epsilon (pT74)
Catalog # AP61071**Specification**

Anti-C/EBP epsilon (pT74) Antibody - Product Information

Application	WB, IF/IC, IHC
Primary Accession	Q15744
Other Accession	Q6PZD9
Reactivity	Human, Mouse, Rat, SARS
Host	Rabbit
Clonality	Polyclonal
Calculated MW	30603

Anti-C/EBP epsilon (pT74) Antibody - Additional Information**Gene ID** 1053**Other Names**

CCAAT/enhancer-binding protein epsilon; C/EBP epsilon

Target/Specificity

Recognizes endogenous levels of C/EBP epsilon (pT74) protein.

Dilution

WB~~WB (1/500 - 1/1000), IH (1/50 - 1/100), IF/IC (1/100 - 1/500)

IF/IC~~N/A

IHC~~1:100~500

Format

Liquid in 0.42% Potassium phosphate, 0.87% Sodium chloride, pH 7.3, 30% glycerol, and 0.09% (W/V) sodium azide.

Storage

Store at -20 °C. Stable for 12 months from date of receipt

Anti-C/EBP epsilon (pT74) Antibody - Protein Information**Name** CEBPE**Function**

Transcriptional activator (PubMed:26019275). C/EBP are DNA- binding proteins that recognize two different motifs: the CCAAT homology common to many promoters and the enhanced core homology common to many enhancers. Required for the promyelocyte-myelocyte transition in myeloid differentiation (PubMed:10359588).

Cellular Location

Nucleus

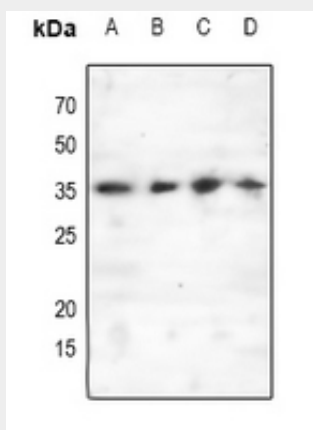
Tissue Location

Strongest expression occurs in promyelocyte and late-myeloblast-like cell lines.

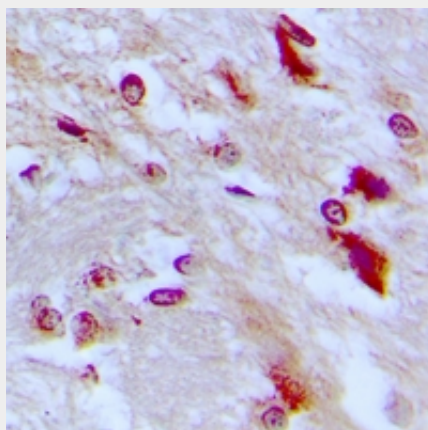
Anti-C/EBP epsilon (pT74) Antibody - Protocols

Provided below are standard protocols that you may find useful for product applications.

- [Western Blot](#)
- [Blocking Peptides](#)
- [Dot Blot](#)
- [Immunohistochemistry](#)
- [Immunofluorescence](#)
- [Immunoprecipitation](#)
- [Flow Cytometry](#)
- [Cell Culture](#)

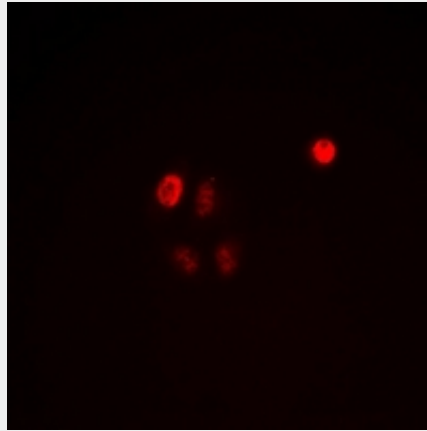
Anti-C/EBP epsilon (pT74) Antibody - Images

Western blot analysis of C/EBP epsilon (pT74) expression in Hela (A), mouse liver (B), Raw264.7 (C), rat liver (D) whole cell lysates.



Immunohistochemical analysis of C/EBP epsilon (pT74) staining in human brain formalin fixed paraffin embedded tissue section. The section was pre-treated using heat mediated antigen

retrieval with sodium citrate buffer (pH 6.0). The section was then incubated with the antibody at room temperature and detected using an HRP conjugated compact polymer system. DAB was used as the chromogen. The section was then counterstained with haematoxylin and mounted with DPX.



Immunofluorescent analysis of C/EBP epsilon (pT74) staining in HeLa cells. Formalin-fixed cells were permeabilized with 0.1% Triton X-100 in TBS for 5-10 minutes and blocked with 3% BSA-PBS for 30 minutes at room temperature. Cells were probed with the primary antibody in 3% BSA-PBS and incubated overnight at 4 °C in a humidified chamber. Cells were washed with PBST and incubated with Alexa Fluor 647-conjugated secondary antibody (red) in PBS at room temperature in the dark.

Anti-C/EBP epsilon (pT74) Antibody - Background

KLH-conjugated synthetic peptide encompassing a sequence within the center region of human C/EBP epsilon. The exact sequence is proprietary.