

Anti-TPH1 (pS58) Antibody
Rabbit polyclonal antibody to TPH1 (pS58)
Catalog # AP61076**Specification**

Anti-TPH1 (pS58) Antibody - Product Information

Application	WB, IHC
Primary Accession	P17752
Other Accession	P17532
Reactivity	Human, Mouse, Rat, Rabbit, Chicken
Host	Rabbit
Clonality	Polyclonal
Calculated MW	50985

Anti-TPH1 (pS58) Antibody - Additional Information**Gene ID** 7166**Other Names**

TPH; TPRH; TRPH; Tryptophan 5-hydroxylase 1; Tryptophan 5-monoxygenase 1

Target/Specificity

Recognizes endogenous levels of TPH1 (pS58) protein.

Dilution

WB~~WB (1/500 - 1/1000), IH (1/50 - 1/100)

IHC~~1:100~500

Format

Liquid in 0.42% Potassium phosphate, 0.87% Sodium chloride, pH 7.3, 30% glycerol, and 0.09% (W/V) sodium azide.

Storage

Store at -20 °C. Stable for 12 months from date of receipt

Anti-TPH1 (pS58) Antibody - Protein Information**Name** TPH1**Synonyms** TPH, TPRH, TRPH**Function**

Oxidizes L-tryptophan to 5-hydroxy-L-tryptophan in the rate- determining step of serotonin biosynthesis.

Tissue Location

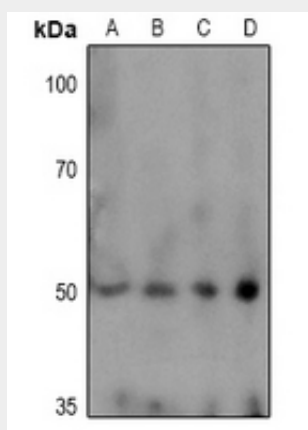
[Isoform 2]: Seems to be less widely expressed than isoform 1.

Anti-TPH1 (pS58) Antibody - Protocols

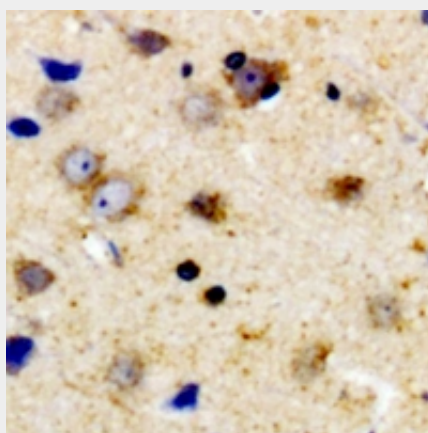
Provided below are standard protocols that you may find useful for product applications.

- [Western Blot](#)
- [Blocking Peptides](#)
- [Dot Blot](#)
- [Immunohistochemistry](#)
- [Immunofluorescence](#)
- [Immunoprecipitation](#)
- [Flow Cytometry](#)
- [Cell Culture](#)

Anti-TPH1 (pS58) Antibody - Images



Western blot analysis of TPH1 (pS58) expression in HEK293T (A), THP1 (B), MCF7 (C), SGC7901 (D) whole cell lysates.



Immunohistochemical analysis of TPH1 (pS58) staining in human brain formalin fixed paraffin embedded tissue section. The section was pre-treated using heat mediated antigen retrieval with sodium citrate buffer (pH 6.0). The section was then incubated with the antibody at room temperature and detected using an HRP conjugated compact polymer system. DAB was used as the chromogen. The section was then counterstained with haematoxylin and mounted with DPX.

Anti-TPH1 (pS58) Antibody - Background

KLH-conjugated synthetic peptide encompassing a sequence within the N-term region of human

TPH1. The exact sequence is proprietary.