

Anti-CD91 (pS4520) Antibody
Rabbit polyclonal antibody to CD91 (pS4520)
Catalog # AP61095**Specification**

Anti-CD91 (pS4520) Antibody - Product Information

| | |
|-------------------|------------------------|
| Application | WB |
| Primary Accession | Q07954 |
| Other Accession | Q91ZX7 |
| Reactivity | Human, Mouse, Rat |
| Host | Rabbit |
| Clonality | Polyclonal |
| Calculated MW | 504606 |

Anti-CD91 (pS4520) Antibody - Additional Information**Gene ID** 4035**Other Names**

A2MR; APR; Prolow-density lipoprotein receptor-related protein 1; LRP-1; Alpha-2-macroglobulin receptor; A2MR; Apolipoprotein E receptor; APOER; CD91

Target/Specificity

KLH-conjugated synthetic peptide encompassing a sequence within the C-term region of human CD91. The exact sequence is proprietary.

Dilution

WB~~WB (1/500 - 1/1000)

Format

Liquid in 0.42% Potassium phosphate, 0.87% Sodium chloride, pH 7.3, 30% glycerol, and 0.09% (W/V) sodium azide.

Storage

Store at -20 °C. Stable for 12 months from date of receipt

Anti-CD91 (pS4520) Antibody - Protein Information**Name** LRP1 ([HGNC:6692](#))**Synonyms** A2MR, APR**Function**

Endocytic receptor involved in endocytosis and in phagocytosis of apoptotic cells (PubMed:11907044, PubMed:12713657). Required for early embryonic development (By similarity). Involved in cellular lipid homeostasis. Involved in the plasma clearance of chylomicron remnants and activated LRPAP1 (alpha 2-macroglobulin), as well

as the local metabolism of complexes between plasminogen activators and their endogenous inhibitors. Acts as an LRPAP1 alpha-2- macroglobulin receptor (PubMed:1702392, PubMed:26142438). Acts as TAU/MAPT receptor and controls the endocytosis of TAU/MAPT as well as its subsequent spread (PubMed:32296178). May modulate cellular events, such as APP metabolism, kinase-dependent intracellular signaling, neuronal calcium signaling as well as neurotransmission (PubMed:12888553). Also acts as a receptor for IGFBP3 to mediate cell growth inhibition (PubMed:9252371).

Cellular Location

[Low-density lipoprotein receptor-related protein 1 85 kDa subunit]: Cell membrane; Single-pass type I membrane protein Membrane, coated pit [Low-density lipoprotein receptor-related protein 1 intracellular domain]: Cytoplasm Nucleus. Note=After cleavage, the intracellular domain (LRPICD) is detected both in the cytoplasm and in the nucleus.

Tissue Location

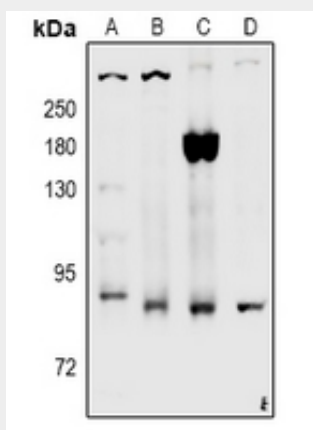
Most abundant in liver, brain and lung.

Anti-CD91 (pS4520) Antibody - Protocols

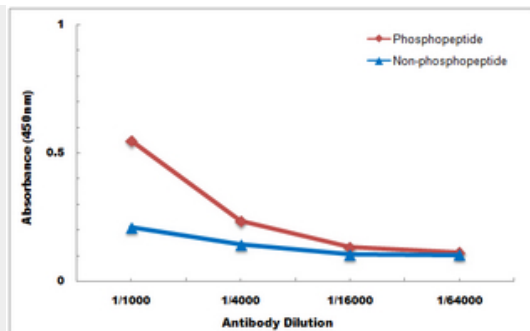
Provided below are standard protocols that you may find useful for product applications.

- [Western Blot](#)
- [Blocking Peptides](#)
- [Dot Blot](#)
- [Immunohistochemistry](#)
- [Immunofluorescence](#)
- [Immunoprecipitation](#)
- [Flow Cytometry](#)
- [Cell Culture](#)

Anti-CD91 (pS4520) Antibody - Images



Western blot analysis of CD91 (pS4520) expression in rat brain (A), C6 (B), LO2 (C), HEK293T (D) whole cell lysates.



Direct ELISA antibody dose-response curve using Anti-CD91 (pS4520) Antibody. Antigen (phosphopeptide and non-phosphopeptide) concentration is 5 ug/ml. Goat Anti-Rabbit IgG (H&L) - HRP was used as the secondary antibody, and signal was developed by TMB substrate.

Anti-CD91 (pS4520) Antibody - Background

KLH-conjugated synthetic peptide encompassing a sequence within the C-term region of human CD91. The exact sequence is proprietary.