

**Anti-Claudin 4 (pY208) Antibody**  
**Rabbit polyclonal antibody to Claudin 4 (pY208)**  
**Catalog # AP61098****Specification**

---

**Anti-Claudin 4 (pY208) Antibody - Product Information**

Application	WB, IH, E
Primary Accession	<a href="#">O14493</a>
Other Accession	<a href="#">O35054</a>
Reactivity	Human, Mouse, Rat
Host	Rabbit
Clonality	Polyclonal
Calculated MW	22077

**Anti-Claudin 4 (pY208) Antibody - Additional Information****Gene ID** 1364**Other Names**CPE; CPETR1; WBSCR8; Claudin-4; Clostridium perfringens enterotoxin receptor; CPE-R;  
CPE-receptor; Williams-Beuren syndrome chromosomal region 8 protein**Target/Specificity**

Recognizes endogenous levels of Claudin 4 (pY208) protein.

**Dilution**

WB~~WB (1/500 - 1/1000), IH (1/50 - 1/100)

IH~~WB (1/500 - 1/1000), IH (1/50 - 1/100)

E~~WB (1/500 - 1/1000), IH (1/50 - 1/100)

**Format**

Liquid in 0.42% Potassium phosphate, 0.87% Sodium chloride, pH 7.3, 30% glycerol, and 0.09% (W/V) sodium azide.

**Storage**

Store at -20 °C. Stable for 12 months from date of receipt

**Anti-Claudin 4 (pY208) Antibody - Protein Information****Name** CLDN4**Function**

Channel-forming tight junction protein that mediates paracellular chloride transport in the kidney. Plays a critical role in the paracellular reabsorption of filtered chloride in the kidney collecting ducts. Claudins play a major role in tight junction-specific obliteration of the intercellular space, through calcium-independent cell-adhesion activity.

**Cellular Location**

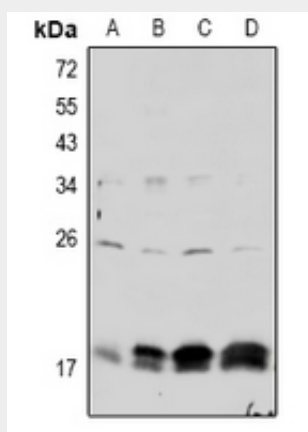
Cell junction, tight junction {ECO:0000250|UniProtKB:O35054}. Cell membrane; Multi-pass membrane protein. Note=CLDN4 is required for tight junction localization in the kidney. {ECO:0000250|UniProtKB:O35054}

### Anti-Claudin 4 (pY208) Antibody - Protocols

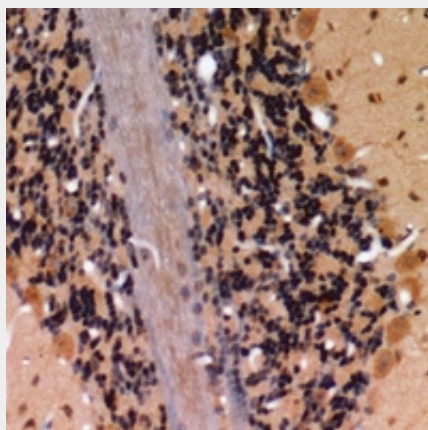
Provided below are standard protocols that you may find useful for product applications.

- [Western Blot](#)
- [Blocking Peptides](#)
- [Dot Blot](#)
- [Immunohistochemistry](#)
- [Immunofluorescence](#)
- [Immunoprecipitation](#)
- [Flow Cytometry](#)
- [Cell Culture](#)

### Anti-Claudin 4 (pY208) Antibody - Images

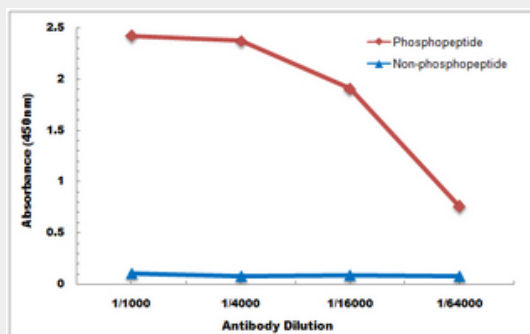


Western blot analysis of Claudin 4 (pY208) expression in mouse embryo (A), rat ovary (B), Panc1 (C), HCT116 (D) whole cell lysates.



Immunohistochemical analysis of Claudin 4 (pY208) staining in human brain formalin fixed paraffin embedded tissue section. The section was pre-treated using heat mediated antigen retrieval with sodium citrate buffer (pH 6.0). The section was then incubated with the antibody at room temperature and detected using an HRP conjugated compact polymer system. DAB was

used as the chromogen. The section was then counterstained with haematoxylin and mounted with DPX.



Direct ELISA antibody dose-response curve using Anti-Claudin 4 (pY208) Antibody. Antigen (phosphopeptide and non-phosphopeptide) concentration is 5 ug/ml. Goat Anti-Rabbit IgG (H&L) - HRP was used as the secondary antibody, and signal was developed by TMB substrate.

#### **Anti-Claudin 4 (pY208) Antibody - Background**

KLH-conjugated synthetic peptide encompassing a sequence within the C-term region of human Claudin 4. The exact sequence is proprietary.