

**ABCB10 Antibody (N-term)**  
**Affinity Purified Rabbit Polyclonal Antibody (Pab)**  
**Catalog # AP6109a****Specification**

---

**ABCB10 Antibody (N-term) - Product Information**

Application	WB, IHC-P,E
Primary Accession	<a href="#">O9NRK6</a>
Other Accession	<a href="#">NP_036221</a>
Reactivity	Human
Host	Rabbit
Clonality	Polyclonal
Isotype	Rabbit IgG
Antigen Region	1-27

**ABCB10 Antibody (N-term) - Additional Information****Gene ID** 23456**Other Names**

ATP-binding cassette sub-family B member 10, mitochondrial, ATP-binding cassette transporter 10, ABC transporter 10 protein, Mitochondrial ATP-binding cassette 2, M-ABC2, ABCB10

**Target/Specificity**

This ABCB10 antibody is generated from rabbits immunized with a KLH conjugated synthetic peptide between 1-27 amino acids from the N-terminal region of human ABCB10.

**Dilution**

WB~~1:1000-1:2000

IHC-P~~1:25

E~~Use at an assay dependent concentration.

**Format**

Purified polyclonal antibody supplied in PBS with 0.09% (W/V) sodium azide. This antibody is purified through a protein A column, followed by peptide affinity purification.

**Storage**

Maintain refrigerated at 2-8°C for up to 2 weeks. For long term storage store at -20°C in small aliquots to prevent freeze-thaw cycles.

**Precautions**

ABCB10 Antibody (N-term) is for research use only and not for use in diagnostic or therapeutic procedures.

**ABCB10 Antibody (N-term) - Protein Information****Name** ABCB10 ([HGNC:41](#))

**Function** ATP-dependent transporter located in the mitochondrial inner membrane that catalyzes the export of biliverdin from the mitochondrial matrix, and plays a crucial role in hemoglobin synthesis and antioxidative stress (PubMed:[22085049](#), PubMed:[28315685](#), PubMed:[28808058](#), PubMed:[34011630](#), PubMed:[37041204](#)). Participates in the early step of the heme biosynthetic process during insertion of iron into protoporphyrin IX (PPIX) (PubMed:[22085049](#), PubMed:[28808058](#)). Involved in the stabilization of the iron transporter mitoferrin- 1/SLC25A37 (By similarity). In addition may be involved in mitochondrial unfolded protein response (UPRmt) signaling pathway, although ABCB10 probably does not participate in peptide export from mitochondria (PubMed:[28315685](#)).

#### Cellular Location

Mitochondrion inner membrane {ECO:0000250|UniProtKB:Q9J139}; Multi-pass membrane protein

#### Tissue Location

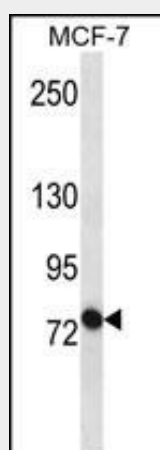
Ubiquitous. Highly expressed in bone marrow, expressed at intermediate to high levels in skeletal muscle, small intestine, thyroid, heart, brain, placenta, liver, pancreas, prostate, testis, ovary, leukocyte, stomach, spinal cord, lymph node, trachea and adrenal gland, and low levels are found in lung, kidney, spleen, thymus and colon.

#### ABCB10 Antibody (N-term) - Protocols

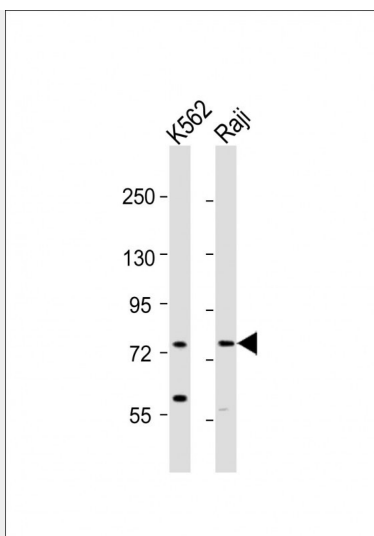
Provided below are standard protocols that you may find useful for product applications.

- [Western Blot](#)
- [Blocking Peptides](#)
- [Dot Blot](#)
- [Immunohistochemistry](#)
- [Immunofluorescence](#)
- [Immunoprecipitation](#)
- [Flow Cytometry](#)
- [Cell Culture](#)

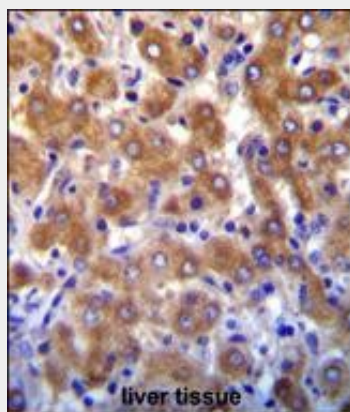
#### ABCB10 Antibody (N-term) - Images



ABCB10 Antibody (S16) (Cat. #AP6109a) western blot analysis in MCF-7 cell line lysates (35ug/lane). This demonstrates the ABCB10 antibody detected the ABCB10 protein (arrow).



All lanes : Anti-ABCB10 Antibody (S16) at 1:1000-1:2000 dilution Lane 1: K562 whole cell lysates Lane 2: Raji whole cell lysates Lysates/proteins at 20 µg per lane. Secondary Goat Anti-Rabbit IgG, (H+L), Peroxidase conjugated at 1/10000 dilution Predicted band size : 79 kDa Blocking/Dilution buffer: 5% NFDM/TBST.



ABCB10 antibody (N-term) (Cat. #AP6109a) immunohistochemistry analysis in formalin fixed and paraffin embedded human liver tissue followed by peroxidase conjugation of the secondary antibody and DAB staining. This data demonstrates the use of ABCB10 antibody (N-term) for immunohistochemistry. Clinical relevance has not been evaluated.



AP6109a staining hABCB10 in Human skeletal muscle tissue sections by Immunohistochemistry (IHC-P - paraformaldehyde-fixed, paraffin-embedded sections). Tissue was fixed with formaldehyde and blocked with 3% BSA for 0.5 hour at room temperature; antigen retrieval was by heat mediation with a citrate buffer (pH6). Samples were incubated with primary antibody (1/25) for 1 hour at 37°C. A undiluted biotinylated goat polyvalent antibody was used as the secondary antibody.

#### **ABCB10 Antibody (N-term) - Background**

The membrane-associated protein ABCB10 is a member of the superfamily of ATP-binding cassette (ABC) transporters. ABC proteins transport various molecules across extra- and intra-cellular membranes. ABC genes are divided into seven distinct subfamilies (ABC1, MDR/TAP, MRP, ALD, OABP, GCN20, White). This protein is a member of the MDR/TAP subfamily. Members of the MDR/TAP subfamily are involved in multidrug resistance. The function of this mitochondrial protein is unknown.

#### **ABCB10 Antibody (N-term) - References**

Zhang, F., et al., J. Biol. Chem. 275(30):23287-23294 (2000). Allikmets, R., et al., Mamm. Genome 6(2):114-117 (1995). Zhang, F., et al., FEBS Lett. 478 (1-2), 89-94 (2000).