

**Anti-RGS19 (pS151) Antibody**  
**Rabbit polyclonal antibody to RGS19 (pS151)**  
**Catalog # AP61101****Specification**

---

**Anti-RGS19 (pS151) Antibody - Product Information**

Application	WB
Primary Accession	<a href="#">P49795</a>
Other Accession	<a href="#">Q9CX84</a>
Reactivity	Human, Mouse, Rat, Bovine
Host	Rabbit
Clonality	Polyclonal
Calculated MW	24636

**Anti-RGS19 (pS151) Antibody - Additional Information****Gene ID** 10287**Other Names**

GAIP; GNAI3IP; Regulator of G-protein signaling 19; RGS19; G-alpha-interacting protein; GAIP

**Target/Specificity**

Recognizes endogenous levels of RGS19 (pS151) protein.

**Dilution**

WB~~WB (1/500 - 1/1000)

**Format**

Liquid in 0.42% Potassium phosphate, 0.87% Sodium chloride, pH 7.3, 30% glycerol, and 0.09% (W/V) sodium azide.

**Storage**

Store at -20 °C. Stable for 12 months from date of receipt

**Anti-RGS19 (pS151) Antibody - Protein Information****Name** RGS19**Synonyms** GAIP, GNAI3IP**Function**

Inhibits signal transduction by increasing the GTPase activity of G protein alpha subunits thereby driving them into their inactive GDP-bound form. Binds to G-alpha subfamily 1 members, with the order G(i)a3 &gt; G(i)a1 &gt; G(o)a &gt;&gt; G(z)a/G(i)a2. Activity on G(z)-alpha is inhibited by phosphorylation and palmitoylation of the G-protein.

**Cellular Location**

Membrane; Lipid-anchor.

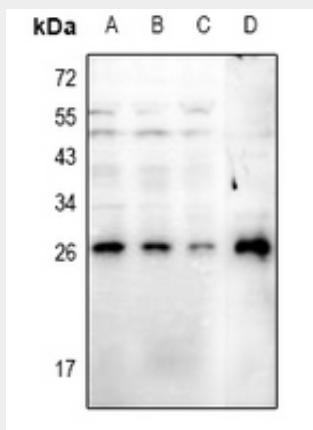
**Tissue Location**

Highest expression in lung. Placenta, liver and heart also express high levels of GAIP

**Anti-RGS19 (pS151) Antibody - Protocols**

Provided below are standard protocols that you may find useful for product applications.

- [Western Blot](#)
- [Blocking Peptides](#)
- [Dot Blot](#)
- [Immunohistochemistry](#)
- [Immunofluorescence](#)
- [Immunoprecipitation](#)
- [Flow Cytometry](#)
- [Cell Culture](#)

**Anti-RGS19 (pS151) Antibody - Images**

Western blot analysis of RGS19 (pS151) expression in A549 (A), H1792 (B), HepG2 (C), rat heart (D) whole cell lysates.

**Anti-RGS19 (pS151) Antibody - Background**

KLH-conjugated synthetic peptide encompassing a sequence within the center region of human RGS19. The exact sequence is proprietary.