

Anti-MBP (pT232) Antibody
Rabbit polyclonal antibody to MBP (pT232)
Catalog # AP61102**Specification**

Anti-MBP (pT232) Antibody - Product Information

Application	WB
Primary Accession	P02686
Other Accession	P04370
Reactivity	Human, Mouse, Rat, Pig, Bovine
Host	Rabbit
Clonality	Polyclonal
Calculated MW	33117

Anti-MBP (pT232) Antibody - Additional Information**Gene ID** 4155**Other Names**

Myelin basic protein; MBP; Myelin A1 protein; Myelin membrane encephalitogenic protein

Target/Specificity

Recognizes endogenous levels of MBP (pT232) protein.

Dilution

WB~~WB (1/500 - 1/1000)

Format

Liquid in 0.42% Potassium phosphate, 0.87% Sodium chloride, pH 7.3, 30% glycerol, and 0.09% (W/V) sodium azide.

Storage

Store at -20 °C. Stable for 12 months from date of receipt

Anti-MBP (pT232) Antibody - Protein Information**Name** MBP**Function**

The classic group of MBP isoforms (isoform 4-isoform 14) are with PLP the most abundant protein components of the myelin membrane in the CNS. They have a role in both its formation and stabilization. The smaller isoforms might have an important role in remyelination of denuded axons in multiple sclerosis. The non-classic group of MBP isoforms (isoform 1-isoform 3/Golli-MBPs) may preferentially have a role in the early developing brain long before myelination, maybe as components of transcriptional complexes, and may also be involved in signaling pathways in T-cells and neural cells. Differential splicing events combined with optional post-translational modifications give a wide spectrum of isomers, with each of them potentially having a specialized function. Induces T-cell proliferation.

Cellular Location

Myelin membrane; Peripheral membrane protein; Cytoplasmic side. Note=Cytoplasmic side of myelin

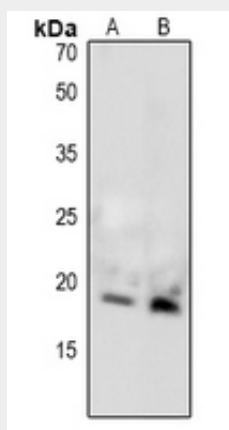
Tissue Location

MBP isoforms are found in both the central and the peripheral nervous system, whereas Golli-MBP isoforms are expressed in fetal thymus, spleen and spinal cord, as well as in cell lines derived from the immune system.

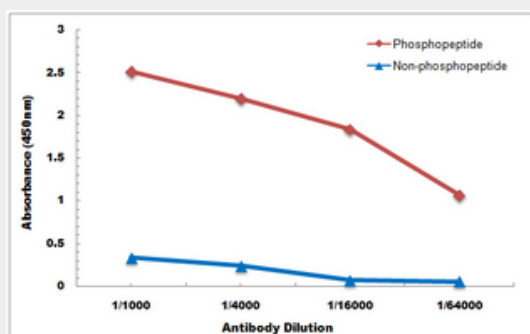
Anti-MBP (pT232) Antibody - Protocols

Provided below are standard protocols that you may find useful for product applications.

- [Western Blot](#)
- [Blocking Peptides](#)
- [Dot Blot](#)
- [Immunohistochemistry](#)
- [Immunofluorescence](#)
- [Immunoprecipitation](#)
- [Flow Cytometry](#)
- [Cell Culture](#)

Anti-MBP (pT232) Antibody - Images

Western blot analysis of MBP (pT232) expression in mouse brain (A), rat brain (B) whole cell lysates.



Direct ELISA antibody dose-response curve using Anti-MBP (pT232) Antibody. Antigen (phosphopeptide and non-phosphopeptide) concentration is 5 ug/ml. Goat Anti-Rabbit IgG (H&L) -

HRP was used as the secondary antibody, and signal was developed by TMB substrate.

Anti-MBP (pT232) Antibody - Background

KLH-conjugated synthetic peptide encompassing a sequence within the center region of human MBP. The exact sequence is proprietary.