

**Anti-PTP1B (pY66) Antibody**  
**Rabbit polyclonal antibody to PTP1B (pY66)**  
**Catalog # AP61103**

**Specification**

---

**Anti-PTP1B (pY66) Antibody - Product Information**

Application	WB
Primary Accession	<a href="#">P18031</a>
Other Accession	<a href="#">P35821</a>
Reactivity	Human, Mouse, Rat
Host	Rabbit
Clonality	Polyclonal
Calculated MW	49967

**Anti-PTP1B (pY66) Antibody - Additional Information**

**Gene ID** 5770

**Other Names**

PTP1B; Tyrosine-protein phosphatase non-receptor type 1; Protein-tyrosine phosphatase 1B; PTP-1B

**Target/Specificity**

Recognizes endogenous levels of PTP1B (pY66) protein.

**Dilution**

WB~~WB (1/500 - 1/1000)

**Format**

Liquid in 0.42% Potassium phosphate, 0.87% Sodium chloride, pH 7.3, 30% glycerol, and 0.09% (W/V) sodium azide.

**Storage**

Store at -20 °C. Stable for 12 months from date of receipt

**Anti-PTP1B (pY66) Antibody - Protein Information**

**Name** PTPN1

**Synonyms** PTP1B

**Function**

Tyrosine-protein phosphatase which acts as a regulator of endoplasmic reticulum unfolded protein response. Mediates dephosphorylation of EIF2AK3/PERK; inactivating the protein kinase activity of EIF2AK3/PERK. May play an important role in CKII- and p60c- src-induced signal transduction cascades. May regulate the EFNA5-EPHA3 signaling pathway which modulates cell reorganization and cell-cell repulsion. May also regulate the hepatocyte growth factor receptor signaling pathway through dephosphorylation of MET.

### Cellular Location

Endoplasmic reticulum membrane; Peripheral membrane protein; Cytoplasmic side Note=Interacts with EPHA3 at the cell membrane

### Tissue Location

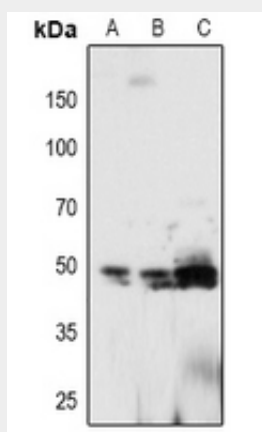
Expressed in keratinocytes (at protein level).

## Anti-PTP1B (pY66) Antibody - Protocols

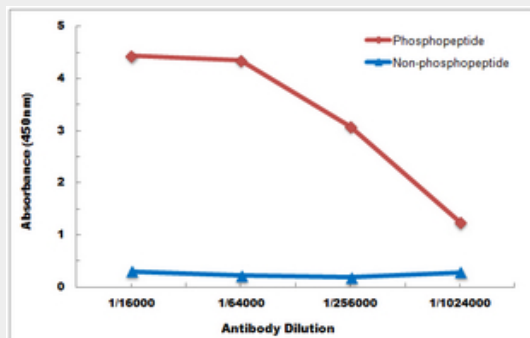
Provided below are standard protocols that you may find useful for product applications.

- [Western Blot](#)
- [Blocking Peptides](#)
- [Dot Blot](#)
- [Immunohistochemistry](#)
- [Immunofluorescence](#)
- [Immunoprecipitation](#)
- [Flow Cytometry](#)
- [Cell Culture](#)

## Anti-PTP1B (pY66) Antibody - Images



Western blot analysis of PTP1B (pY66) expression in MCF7 (A), A549 (B), mouse lung (C) whole cell lysates.



Direct ELISA antibody dose-response curve using Anti-PTP1B (pY66) Antibody. Antigen (phosphopeptide and non-phosphopeptide) concentration is 5 ug/ml. Goat Anti-Rabbit IgG (H&L) - HRP was used as the secondary antibody, and signal was developed by TMB substrate.

## Anti-PTP1B (pY66) Antibody - Background

KLH-conjugated synthetic peptide encompassing a sequence within the N-term region of human PTP1B. The exact sequence is proprietary.