

**Anti-CRKL Antibody**  
**Rabbit polyclonal antibody to CRKL**  
**Catalog # AP61110****Specification**

---

**Anti-CRKL Antibody - Product Information**

Application	WB, IF/IC, IHC
Primary Accession	<a href="#">P46109</a>
Other Accession	<a href="#">P47941</a>
Reactivity	Human, Mouse, Rat
Host	Rabbit
Clonality	Polyclonal
Calculated MW	33777

**Anti-CRKL Antibody - Additional Information****Gene ID** 1399**Other Names**

Crk-like protein

**Target/Specificity**

Recognizes endogenous levels of CRKL protein.

**Dilution**

WB~~WB (1/500 - 1/1000), IH (1/50 - 1/100), IF/IC (1/100 - 1/500)

IF/IC~~N/A

IHC~~1:100~500

**Format**

Liquid in 0.42% Potassium phosphate, 0.87% Sodium chloride, pH 7.3, 30% glycerol, and 0.09% (W/V) sodium azide.

**Storage**

Store at -20 °C.Stable for 12 months from date of receipt

**Anti-CRKL Antibody - Protein Information****Name** CRKL**Function**

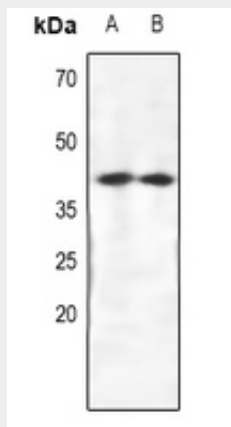
May mediate the transduction of intracellular signals.

**Anti-CRKL Antibody - Protocols**

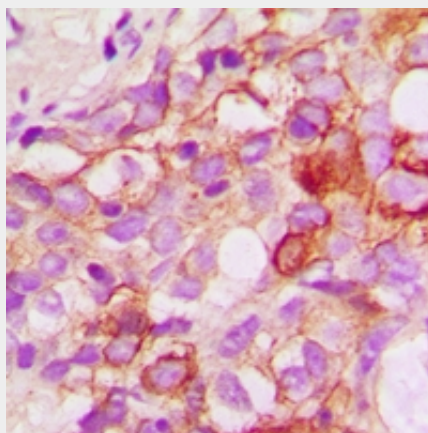
Provided below are standard protocols that you may find useful for product applications.

- [Western Blot](#)
- [Blocking Peptides](#)
- [Dot Blot](#)
- [Immunohistochemistry](#)
- [Immunofluorescence](#)
- [Immunoprecipitation](#)
- [Flow Cytometry](#)
- [Cell Culture](#)

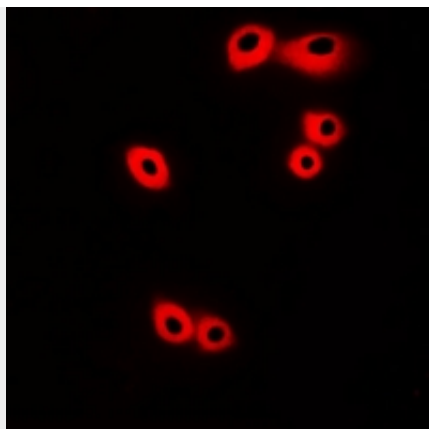
#### Anti-CRKL Antibody - Images



Western blot analysis of CRKL expression in HEK293T (A), SGC7901 (B) whole cell lysates.



Immunohistochemical analysis of CRKL staining in human breast cancer formalin fixed paraffin embedded tissue section. The section was pre-treated using heat mediated antigen retrieval with sodium citrate buffer (pH 6.0). The section was then incubated with the antibody at room temperature and detected using an HRP conjugated compact polymer system. DAB was used as the chromogen. The section was then counterstained with haematoxylin and mounted with DPX.



Immunofluorescent analysis of CRKL staining in HuvEc cells. Formalin-fixed cells were permeabilized with 0.1% Triton X-100 in TBS for 5-10 minutes and blocked with 3% BSA-PBS for 30 minutes at room temperature. Cells were probed with the primary antibody in 3% BSA-PBS and incubated overnight at 4 °C in a humidified chamber. Cells were washed with PBST and incubated with Alexa Fluor 647-conjugated secondary antibody (red) in PBS at room temperature in the dark.

#### **Anti-CRKL Antibody - Background**

KLH-conjugated synthetic peptide encompassing a sequence within the center region of human CRKL. The exact sequence is proprietary.