

**Anti-Doublecortin Antibody**  
**Rabbit polyclonal antibody to Doublecortin**  
**Catalog # AP61113****Specification**

---

**Anti-Doublecortin Antibody - Product Information**

Application	WB, IH
Primary Accession	<a href="#">O43602</a>
Other Accession	<a href="#">O88809</a>
Reactivity	Human, Mouse, Rat
Host	Rabbit
Clonality	Polyclonal
Calculated MW	40574

**Anti-Doublecortin Antibody - Additional Information****Gene ID** 1641**Other Names**

DBCN; LISX; Neuronal migration protein doublecortin; Dublin; Lissencephalin-X; Lis-X

**Target/Specificity**

Recognizes endogenous levels of Doublecortin protein.

**Dilution**

WB~~WB (1/500 - 1/1000), IH (1/50 - 1/100)

IH~~WB (1/500 - 1/1000), IH (1/50 - 1/100)

**Format**

Liquid in 0.42% Potassium phosphate, 0.87% Sodium chloride, pH 7.3, 30% glycerol, and 0.09% (W/V) sodium azide.

**Storage**

Store at -20 °C. Stable for 12 months from date of receipt

**Anti-Doublecortin Antibody - Protein Information****Name** DCX**Synonyms** DBCN, LISX**Function**

Microtubule-associated protein required for initial steps of neuronal dispersion and cortex lamination during cerebral cortex development. May act by competing with the putative neuronal protein kinase DCLK1 in binding to a target protein. May in that way participate in a signaling pathway that is crucial for neuronal interaction before and during migration, possibly as part of a calcium ion-dependent signal transduction pathway. May be part with PAFAH1B1/LIS-1 of overlapping, but distinct, signaling pathways that promote neuronal migration.

**Cellular Location**

Cytoplasm. Cell projection, neuron projection {ECO:0000250|UniProtKB:Q9ESI7}. Note=Localizes at neurite tips. {ECO:0000250|UniProtKB:Q9ESI7}

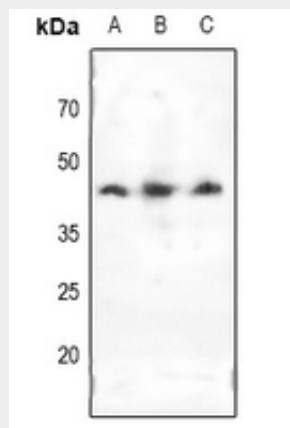
**Tissue Location**

Highly expressed in neuronal cells of fetal brain (in the majority of cells of the cortical plate, intermediate zone and ventricular zone), but not expressed in other fetal tissues. In the adult, highly expressed in the brain frontal lobe, but very low expression in other regions of brain, and not detected in heart, placenta, lung, liver, skeletal muscles, kidney and pancreas

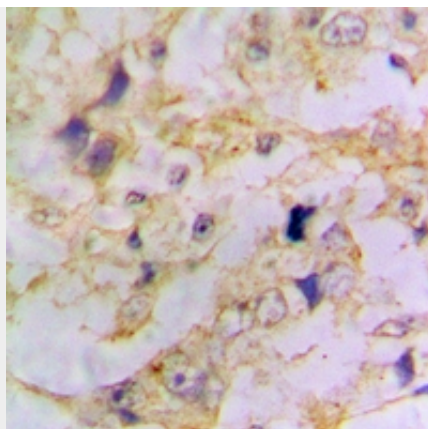
**Anti-Doublecortin Antibody - Protocols**

Provided below are standard protocols that you may find useful for product applications.

- [Western Blot](#)
- [Blocking Peptides](#)
- [Dot Blot](#)
- [Immunohistochemistry](#)
- [Immunofluorescence](#)
- [Immunoprecipitation](#)
- [Flow Cytometry](#)
- [Cell Culture](#)

**Anti-Doublecortin Antibody - Images**

Western blot analysis of Doublecortin expression in HeLa (A), HEK293T (B), HepG2 (C) whole cell lysates.



Immunohistochemical analysis of Doublecortin staining in human lung cancer formalin fixed paraffin embedded tissue section. The section was pre-treated using heat mediated antigen retrieval with sodium citrate buffer (pH 6.0). The section was then incubated with the antibody at room temperature and detected using an HRP conjugated compact polymer system. DAB was used as the chromogen. The section was then counterstained with haematoxylin and mounted with DPX.

#### **Anti-Doublecortin Antibody - Background**

KLH-conjugated synthetic peptide encompassing a sequence within the center region of human Doublecortin. The exact sequence is proprietary.