

Anti-DAP Kinase 2 Antibody
Rabbit polyclonal antibody to DAP Kinase 2
Catalog # AP61114**Specification**

Anti-DAP Kinase 2 Antibody - Product Information

Application	WB, IHC
Primary Accession	Q9UIK4
Other Accession	Q8VDF3
Reactivity	Human, Mouse
Host	Rabbit
Clonality	Polyclonal
Calculated MW	42898

Anti-DAP Kinase 2 Antibody - Additional Information**Gene ID** 23604**Other Names**

Death-associated protein kinase 2; DAP kinase 2; DAP-kinase-related protein 1; DRP-1

Target/Specificity

KLH-conjugated synthetic peptide encompassing a sequence within the C-term region of human DAP Kinase 2. The exact sequence is proprietary.

Dilution

WB~~WB (1/500 - 1/1000), IH (1/50 - 1/100)

IHC~~1:100~500

Format

Liquid in 0.42% Potassium phosphate, 0.87% Sodium chloride, pH 7.3, 30% glycerol, and 0.09% (W/V) sodium azide.

Storage

Store at -20 °C. Stable for 12 months from date of receipt

Anti-DAP Kinase 2 Antibody - Protein Information**Name** DAPK2**Function**

Calcium/calmodulin-dependent serine/threonine kinase involved in multiple cellular signaling pathways that trigger cell survival, apoptosis, and autophagy. Regulates both type I apoptotic and type II autophagic cell death signals, depending on the cellular setting. The former is caspase-dependent, while the latter is caspase-independent and is characterized by the accumulation of autophagic vesicles. Acts as a mediator of anoikis and a suppressor of beta-catenin-dependent anchorage-independent growth of malignant epithelial cells. May play a role in granulocytic maturation (PubMed:<a href="http://www.uniprot.org/citations/17347302"

target="_blank">17347302). Regulates granulocytic motility by controlling cell spreading and polarization (PubMed:24163421).

Cellular Location

Cytoplasm. Cytoplasmic vesicle, autophagosome lumen

Tissue Location

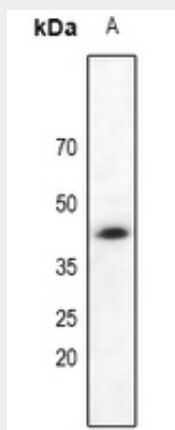
Expressed in neutrophils and eosinophils (PubMed:24163421). Isoform 2 is expressed in embryonic stem cells (at protein level). Isoform 1 is ubiquitously expressed in all tissue types examined with high levels in heart, lung and skeletal muscle

Anti-DAP Kinase 2 Antibody - Protocols

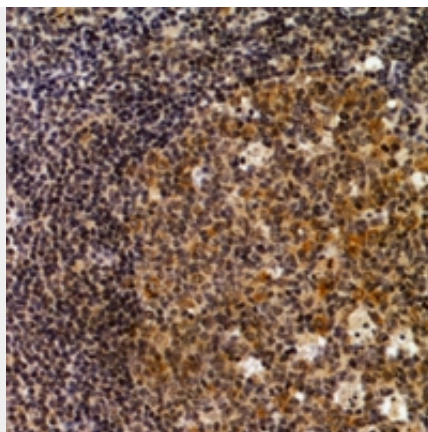
Provided below are standard protocols that you may find useful for product applications.

- [Western Blot](#)
- [Blocking Peptides](#)
- [Dot Blot](#)
- [Immunohistochemistry](#)
- [Immunofluorescence](#)
- [Immunoprecipitation](#)
- [Flow Cytometry](#)
- [Cell Culture](#)

Anti-DAP Kinase 2 Antibody - Images



Western blot analysis of DAP Kinase 2 expression in PC3 (A) whole cell lysates.



Immunohistochemical analysis of DAP Kinase 2 staining in human tonsil formalin fixed paraffin embedded tissue section. The section was pre-treated using heat mediated antigen retrieval with sodium citrate buffer (pH 6.0). The section was then incubated with the antibody at room temperature and detected using an HRP conjugated compact polymer system. DAB was used as the chromogen. The section was then counterstained with haematoxylin and mounted with DPX.

Anti-DAP Kinase 2 Antibody - Background

KLH-conjugated synthetic peptide encompassing a sequence within the C-term region of human DAP Kinase 2. The exact sequence is proprietary.