

**Anti-SF1 Antibody**  
**Rabbit polyclonal antibody to SF1**  
**Catalog # AP61122****Specification**

---

**Anti-SF1 Antibody - Product Information**

Application	WB, IF/IC, IHC
Primary Accession	<a href="#">Q15637</a>
Other Accession	<a href="#">Q64213</a>
Reactivity	Human, Mouse
Host	Rabbit
Clonality	Polyclonal
Calculated MW	68330

**Anti-SF1 Antibody - Additional Information****Gene ID** 7536**Other Names**ZFM1; ZNF162; Splicing factor 1; Mammalian branch point-binding protein; BBP; mBBP;  
Transcription factor ZFM1; Zinc finger gene in MEN1 locus; Zinc finger protein 162**Target/Specificity**

Recognizes endogenous levels of SF1 protein.

**Dilution**

WB~~WB (1/500 - 1/1000), IH (1/50 - 1/100), IF/IC (1/100 - 1/500)

IF/IC~~N/A

IHC~~1:100~500

**Format**

Liquid in 0.42% Potassium phosphate, 0.87% Sodium chloride, pH 7.3, 30% glycerol, and 0.09% (W/V) sodium azide.

**Storage**

Store at -20 °C.Stable for 12 months from date of receipt

**Anti-SF1 Antibody - Protein Information****Name** SF1**Synonyms** ZFM1, ZNF162**Function**

Necessary for the ATP-dependent first step of spliceosome assembly. Binds to the intron branch point sequence (BPS) 5'-UACUAAC-3' of the pre-mRNA. May act as transcription repressor.

**Cellular Location**

Nucleus.

#### Tissue Location

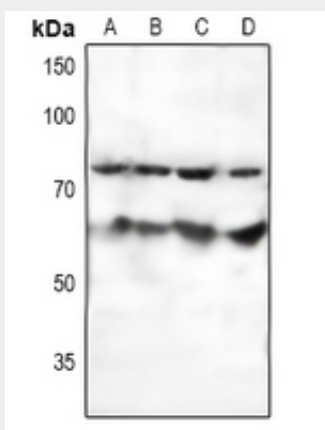
Detected in lung, ovary, adrenal gland, colon, kidney, muscle, pancreas, thyroid, placenta, brain, liver and heart

#### Anti-SF1 Antibody - Protocols

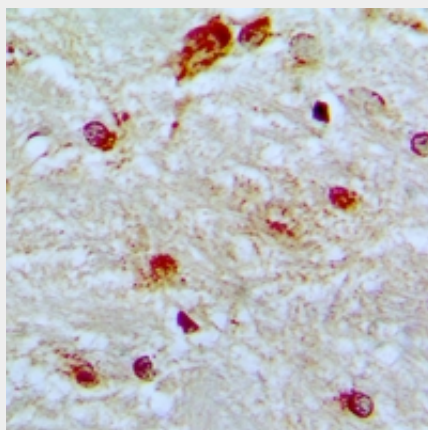
Provided below are standard protocols that you may find useful for product applications.

- [Western Blot](#)
- [Blocking Peptides](#)
- [Dot Blot](#)
- [Immunohistochemistry](#)
- [Immunofluorescence](#)
- [Immunoprecipitation](#)
- [Flow Cytometry](#)
- [Cell Culture](#)

#### Anti-SF1 Antibody - Images



Western blot analysis of SF1 expression in HEK293T (A), Hela (B), K562 (C), LO2 (D) whole cell lysates.



Immunohistochemical analysis of SF1 staining in human brain formalin fixed paraffin embedded tissue section. The section was pre-treated using heat mediated antigen retrieval with sodium

citrate buffer (pH 6.0). The section was then incubated with the antibody at room temperature and detected using an HRP conjugated compact polymer system. DAB was used as the chromogen. The section was then counterstained with haematoxylin and mounted with DPX.



Immunofluorescent analysis of SF1 staining in HeLa cells. Formalin-fixed cells were permeabilized with 0.1% Triton X-100 in TBS for 5-10 minutes and blocked with 3% BSA-PBS for 30 minutes at room temperature. Cells were probed with the primary antibody in 3% BSA-PBS and incubated overnight at 4 °C in a humidified chamber. Cells were washed with PBST and incubated with Alexa Fluor 647-conjugated secondary antibody (red) in PBS at room temperature in the dark.

#### **Anti-SF1 Antibody - Background**

KLH-conjugated synthetic peptide encompassing a sequence within the N-term region of human SF1. The exact sequence is proprietary.