

Anti-MKK5 (pS311) Antibody
Rabbit polyclonal antibody to MKK5 (pS311)
Catalog # AP61123

Specification

Anti-MKK5 (pS311) Antibody - Product Information

Application	WB
Primary Accession	Q13163
Other Accession	Q9WVS7
Reactivity	Human, Mouse, Rat
Host	Rabbit
Clonality	Polyclonal
Calculated MW	50112

Anti-MKK5 (pS311) Antibody - Additional Information

Gene ID 5607

Other Names

MEK5; MKK5; PRKMK5; Dual specificity mitogen-activated protein kinase kinase 5; MAP kinase kinase 5; MAPKK 5; MAPK/ERK kinase 5; MEK 5

Target/Specificity

Recognizes endogenous levels of MKK5 (pS311) protein.

Dilution

WB~~WB (1/500 - 1/1000)

Format

Liquid in 0.42% Potassium phosphate, 0.87% Sodium chloride, pH 7.3, 30% glycerol, and 0.09% (W/V) sodium azide.

Storage

Store at -20 °C.Stable for 12 months from date of receipt

Anti-MKK5 (pS311) Antibody - Protein Information

Name MAP2K5

Synonyms MEK5, MKK5, PRKMK5

Function

Acts as a scaffold for the formation of a ternary MAP3K2/MAP3K3-MAP3K5-MAPK7 signaling complex. Activation of this pathway appears to play a critical role in protecting cells from stress-induced apoptosis, neuronal survival and cardiac development and angiogenesis. As part of the MAPK/ERK signaling pathway, acts as a negative regulator of apoptosis in cardiomyocytes via promotion of STUB1/CHIP-mediated ubiquitination and degradation of ICER-type isoforms of CREM (By similarity).

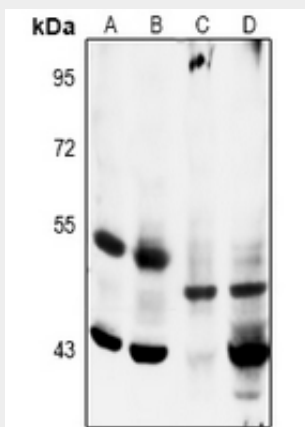
Tissue Location

Expressed in many adult tissues. Abundant in heart and skeletal muscle

Anti-MKK5 (pS311) Antibody - Protocols

Provided below are standard protocols that you may find useful for product applications.

- [Western Blot](#)
- [Blocking Peptides](#)
- [Dot Blot](#)
- [Immunohistochemistry](#)
- [Immunofluorescence](#)
- [Immunoprecipitation](#)
- [Flow Cytometry](#)
- [Cell Culture](#)

Anti-MKK5 (pS311) Antibody - Images

Western blot analysis of MKK5 (pS311) expression in mouse heart (A), rat heart (B), H1792 (C), MCF7 (D) whole cell lysates.

Anti-MKK5 (pS311) Antibody - Background

KLH-conjugated synthetic peptide encompassing a sequence within the center region of human MKK5. The exact sequence is proprietary.