

**Anti-Oligo2 Antibody**  
**Rabbit polyclonal antibody to Oligo2**  
**Catalog # AP61126****Specification**

---

**Anti-Oligo2 Antibody - Product Information**

Application	<b>WB</b>
Primary Accession	<a href="#">Q13516</a>
Other Accession	<a href="#">Q9EQW6</a>
Reactivity	<b>Human, Mouse, Rat</b>
Host	<b>Rabbit</b>
Clonality	<b>Polyclonal</b>
Calculated MW	<b>32385</b>

**Anti-Oligo2 Antibody - Additional Information****Gene ID** 10215**Other Names**

BHLHB1; BHLHE19; PRKCBP2; RACK17; Oligodendrocyte transcription factor 2; Oligo2; Class B basic helix-loop-helix protein 1; bHLHb1; Class E basic helix-loop-helix protein 19; bHLHe19; Protein kinase C-binding protein 2; Protein kinase C-binding protein RACK17

**Target/Specificity**

KLH-conjugated synthetic peptide encompassing a sequence within the center region of human Oligo2. The exact sequence is proprietary.

**Dilution**

WB~~WB (1/500 - 1/1000)

**Format**

Liquid in 0.42% Potassium phosphate, 0.87% Sodium chloride, pH 7.3, 30% glycerol, and 0.09% (W/V) sodium azide.

**Storage**

Store at -20 °C. Stable for 12 months from date of receipt

**Anti-Oligo2 Antibody - Protein Information****Name** OLIG2**Synonyms** BHLHB1, BHLHE19, PRKCBP2, RACK17**Function**

Required for oligodendrocyte and motor neuron specification in the spinal cord, as well as for the development of somatic motor neurons in the hindbrain. Functions together with ZNF488 to promote oligodendrocyte differentiation. Cooperates with OLIG1 to establish the pMN domain of the embryonic neural tube. Antagonist of V2 interneuron and of NKX2-2-induced V3 interneuron

development.

#### Cellular Location

Nucleus {ECO:0000255|PROSITE-ProRule:PRU00981}. Cytoplasm. Note=The NLS contained in the bHLH domain could be masked in the native form and translocation to the nucleus could be mediated by interaction either with class E bHLH partner protein or with NKX2-2.

#### Tissue Location

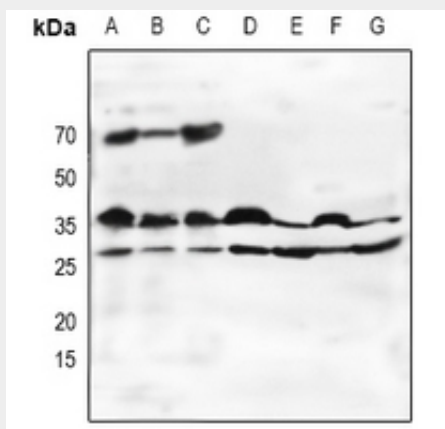
Expressed in the brain, in oligodendrocytes. Strongly expressed in oligodendrogliomas, while expression is weak to moderate in astrocytomas. Expression in glioblastomas highly variable

### Anti-Oligo2 Antibody - Protocols

Provided below are standard protocols that you may find useful for product applications.

- [Western Blot](#)
- [Blocking Peptides](#)
- [Dot Blot](#)
- [Immunohistochemistry](#)
- [Immunofluorescence](#)
- [Immunoprecipitation](#)
- [Flow Cytometry](#)
- [Cell Culture](#)

### Anti-Oligo2 Antibody - Images



Western blot analysis of Oligo2 expression in HEK293T (A), Hela (B), LO2 (C), mouse brain (D), mouse muscle (E), rat brain (F), rat muscle (G) whole cell lysates.

### Anti-Oligo2 Antibody - Background

KLH-conjugated synthetic peptide encompassing a sequence within the center region of human Oligo2. The exact sequence is proprietary.