

Anti-PAX6 Antibody
Rabbit polyclonal antibody to PAX6
Catalog # AP61127**Specification**

Anti-PAX6 Antibody - Product Information

Application	WB
Primary Accession	P26367
Other Accession	P63015
Reactivity	Human, Mouse, Rat, Zebrafish, Chicken, Bovine
Host	Rabbit
Clonality	Polyclonal
Calculated MW	46683

Anti-PAX6 Antibody - Additional Information**Gene ID** 5080**Other Names**

AN2; Paired box protein Pax-6; Aniridia type II protein; Oculorhombin

Target/Specificity

Recognizes endogenous levels of PAX6 protein.

Dilution

WB~~WB (1/500 - 1/1000)

Format

Liquid in 0.42% Potassium phosphate, 0.87% Sodium chloride, pH 7.3, 30% glycerol, and 0.09% (W/V) sodium azide.

Storage

Store at -20 °C. Stable for 12 months from date of receipt

Anti-PAX6 Antibody - Protein Information**Name** PAX6**Synonyms** AN2**Function**

Transcription factor with important functions in the development of the eye, nose, central nervous system and pancreas. Required for the differentiation of pancreatic islet alpha cells (By similarity). Competes with PAX4 in binding to a common element in the glucagon, insulin and somatostatin promoters. Regulates specification of the ventral neuron subtypes by establishing the correct progenitor domains (By similarity). Acts as a transcriptional repressor of NFATC1- mediated gene expression (By similarity).

Cellular Location

Nucleus {ECO:0000250|UniProtKB:P63015}. [Isoform 5a]: Nucleus {ECO:0000250|UniProtKB:P63016}

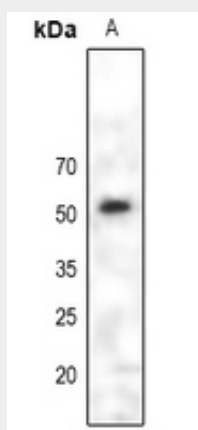
Tissue Location

[Isoform 1]: Expressed in lymphoblasts.

Anti-PAX6 Antibody - Protocols

Provided below are standard protocols that you may find useful for product applications.

- [Western Blot](#)
- [Blocking Peptides](#)
- [Dot Blot](#)
- [Immunohistochemistry](#)
- [Immunofluorescence](#)
- [Immunoprecipitation](#)
- [Flow Cytometry](#)
- [Cell Culture](#)

Anti-PAX6 Antibody - Images

Western blot analysis of PAX6 expression in HEK293T (A) whole cell lysates.

Anti-PAX6 Antibody - Background

KLH-conjugated synthetic peptide encompassing a sequence within the center region of human PAX6. The exact sequence is proprietary.