

Anti-NF-E4 (AcK43) Antibody
Rabbit polyclonal antibody to NF-E4 (AcK43)
Catalog # AP61138

Specification

Anti-NF-E4 (AcK43) Antibody - Product Information

Application	WB
Primary Accession	Q86UQ8
Reactivity	Human, Mouse
Host	Rabbit
Clonality	Polyclonal
Calculated MW	19019

Anti-NF-E4 (AcK43) Antibody - Additional Information

Other Names

Transcription factor NF-E4

Target/Specificity

Recognizes endogenous levels of NF-E4 (AcK43) protein.

Dilution

WB~~WB (1/500 - 1/1000)

Format

Liquid in 0.42% Potassium phosphate, 0.87% Sodium chloride, pH 7.3, 30% glycerol, and 0.09% (W/V) sodium azide.

Storage

Store at -20 °C.Stable for 12 months from date of receipt

Anti-NF-E4 (AcK43) Antibody - Protein Information

Name NFE4

Function

Functions as part of the SSP (stage selector protein) complex, a complex that contributes to the preferential expression of the gamma-gene in fetal erythroid cells by facilitating the interaction of the gamma-globin genes with enhancer elements contained in the locus control region (LCR). The complex binds to the stage selector element (SSE) in the proximal gamma-globin promoter. In contrast, isoform 2 acts as a repressor of gamma-globin gene expression by preventing NFE2 and RNA polymerase II recruitment to the promoter.

Cellular Location

Nucleus.

Tissue Location

Specifically expressed in fetal liver, cord blood and bone marrow. Also expressed in the K562 and

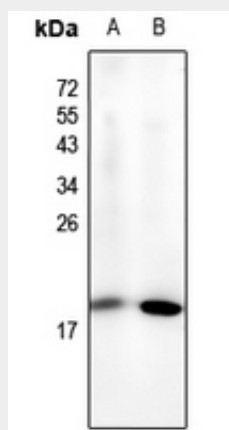
HEL cell lines, which constitutively express the fetal globin genes

Anti-NF-E4 (AcK43) Antibody - Protocols

Provided below are standard protocols that you may find useful for product applications.

- [Western Blot](#)
- [Blocking Peptides](#)
- [Dot Blot](#)
- [Immunohistochemistry](#)
- [Immunofluorescence](#)
- [Immunoprecipitation](#)
- [Flow Cytometry](#)
- [Cell Culture](#)

Anti-NF-E4 (AcK43) Antibody - Images



Western blot analysis of NF-E4 (AcK43) expression in SP20 (A), HeLa (B) whole cell lysates.

Anti-NF-E4 (AcK43) Antibody - Background

KLH-conjugated synthetic peptide encompassing a sequence within the center region of human NF-E4 (AcK43). The exact sequence is proprietary.