

Anti-NFAT1 (pS326) Antibody
Rabbit polyclonal antibody to NFAT1 (pS326)
Catalog # AP61143**Specification**

Anti-NFAT1 (pS326) Antibody - Product Information

Application	WB
Primary Accession	Q13469
Reactivity	Human
Host	Rabbit
Clonality	Polyclonal
Calculated MW	100146

Anti-NFAT1 (pS326) Antibody - Additional Information**Gene ID** 4773**Other Names**

NFAT1; NFATP; Nuclear factor of activated T-cells cytoplasmic 2; NF-ATc2; NFATc2; NFAT pre-existing subunit; NF-ATp; T-cell transcription factor NFAT1

Target/Specificity

Recognizes endogenous levels of NFAT1 (pS326) protein.

Dilution

WB~~WB (1/500 - 1/1000)

Format

Liquid in 0.42% Potassium phosphate, 0.87% Sodium chloride, pH 7.3, 30% glycerol, and 0.09% (W/V) sodium azide.

Storage

Store at -20 °C. Stable for 12 months from date of receipt

Anti-NFAT1 (pS326) Antibody - Protein Information**Name** NFATC2**Synonyms** NFAT1, NFATP**Function**

Plays a role in the inducible expression of cytokine genes in T-cells, especially in the induction of the IL-2, IL-3, IL-4, TNF-alpha or GM-CSF (PubMed:15790681). Promotes invasive migration through the activation of GPC6 expression and WNT5A signaling pathway (PubMed:21871017). Is involved in the negative regulation of chondrogenesis (PubMed:35789258). Recruited by

AKAP5 to ORAI1 pore- forming subunit of CRAC channels in Ca^{2+} signaling microdomains where store-operated Ca^{2+} influx is coupled to calmodulin and calcineurin signaling and activation of NFAT-dependent transcriptional responses.

Cellular Location

Cytoplasm. Nucleus. Note=Cytoplasmic for the phosphorylated form and nuclear after activation that is controlled by calcineurin-mediated dephosphorylation. Rapid nuclear exit of NFATC is thought to be one mechanism by which cells distinguish between sustained and transient calcium signals. The subcellular localization of NFATC plays a key role in the regulation of gene transcription

Tissue Location

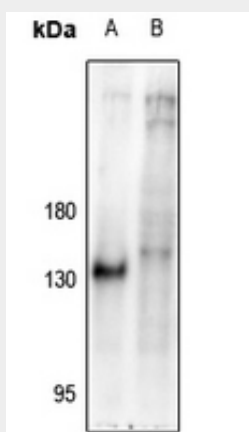
Expressed in thymus, spleen, heart, testis, brain, placenta, muscle and pancreas. Isoform 1 is highly expressed in the small intestine, heart, testis, prostate, thymus, placenta and thyroid. Isoform 3 is highly expressed in stomach, uterus, placenta, trachea and thyroid.

Anti-NFAT1 (pS326) Antibody - Protocols

Provided below are standard protocols that you may find useful for product applications.

- [Western Blot](#)
- [Blocking Peptides](#)
- [Dot Blot](#)
- [Immunohistochemistry](#)
- [Immunofluorescence](#)
- [Immunoprecipitation](#)
- [Flow Cytometry](#)
- [Cell Culture](#)

Anti-NFAT1 (pS326) Antibody - Images



Western blot analysis of NFAT1 (pS326) expression in Jurkat (A), Myla2059 (B) whole cell lysates.

Anti-NFAT1 (pS326) Antibody - Background

KLH-conjugated synthetic peptide encompassing a sequence within the center region of human NFAT1 (pS326). The exact sequence is proprietary.