

**Anti-Beta-2 Adrenergic Receptor (pS355/S356) Antibody**  
**Rabbit polyclonal antibody to Beta-2 Adrenergic Receptor (pS355/S356)**  
**Catalog # AP61150**

**Specification**

---

**Anti-Beta-2 Adrenergic Receptor (pS355/S356) Antibody - Product Information**

Application	WB, IHC
Primary Accession	<a href="#">P07550</a>
Other Accession	<a href="#">P18762</a>
Reactivity	Human, Mouse, Rat
Host	Rabbit
Clonality	Polyclonal
Calculated MW	46459

**Anti-Beta-2 Adrenergic Receptor (pS355/S356) Antibody - Additional Information**

**Gene ID** 154

**Other Names**

ADRB2R; B2AR; Beta-2 adrenergic receptor; Beta-2 adrenoreceptor; Beta-2 adrenoceptor

**Target/Specificity**

Recognizes endogenous levels of Beta-2 Adrenergic Receptor (pS355/S356) protein.

**Dilution**

WB~~WB (1/500 - 1/1000), IH (1/50 - 1/200)

IHC~~1:100~500

**Format**

Liquid in 0.42% Potassium phosphate, 0.87% Sodium chloride, pH 7.3, 30% glycerol, and 0.09% (W/V) sodium azide.

**Storage**

Store at -20 °C. Stable for 12 months from date of receipt

**Anti-Beta-2 Adrenergic Receptor (pS355/S356) Antibody - Protein Information**

**Name** ADRB2

**Synonyms** ADRB2R, B2AR

**Function**

Beta-adrenergic receptors mediate the catecholamine-induced activation of adenylate cyclase through the action of G proteins. The beta-2-adrenergic receptor binds epinephrine with an approximately 30- fold greater affinity than it does norepinephrine.

**Cellular Location**

Cell membrane; Multi-pass membrane protein. Early endosome. Golgi apparatus. Note=Colocalizes

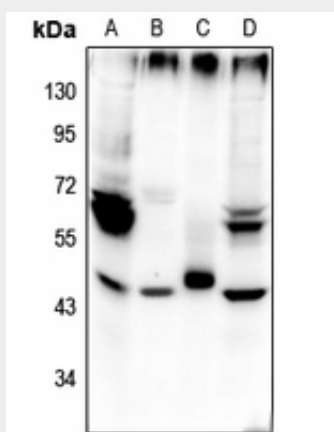
with VHL at the cell membrane (PubMed:19584355). Activated receptors are internalized into endosomes prior to their degradation in lysosomes (PubMed:20559325) Activated receptors are also detected within the Golgi apparatus (PubMed:27481942).

### Anti-Beta-2 Adrenergic Receptor (pS355/S356) Antibody - Protocols

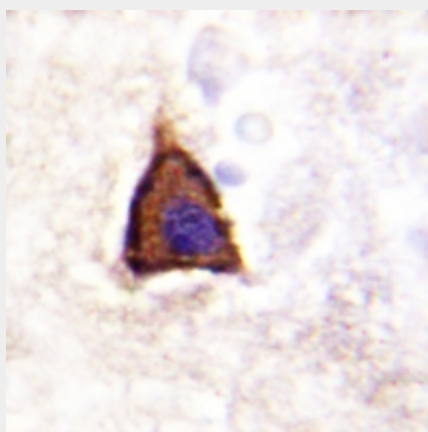
Provided below are standard protocols that you may find useful for product applications.

- [Western Blot](#)
- [Blocking Peptides](#)
- [Dot Blot](#)
- [Immunohistochemistry](#)
- [Immunofluorescence](#)
- [Immunoprecipitation](#)
- [Flow Cytometry](#)
- [Cell Culture](#)

### Anti-Beta-2 Adrenergic Receptor (pS355/S356) Antibody - Images



Western blot analysis of Beta-2 Adrenergic Receptor (pS355/S356) expression in Hela (A), rat prostate (B), mouse lung (C), EC9706 (D) whole cell lysates.



Immunohistochemical analysis of Beta-2 Adrenergic Receptor (pS355/S356) staining in human brain formalin fixed paraffin embedded tissue section. The section was pre-treated using heat mediated antigen retrieval with sodium citrate buffer (pH 6.0). The section was then incubated with the antibody at room temperature and detected using an HRP conjugated compact polymer

system. DAB was used as the chromogen. The section was then counterstained with haematoxylin and mounted with DPX.

#### **Anti-Beta-2 Adrenergic Receptor (pS355/S356) Antibody - Background**

KLH-conjugated synthetic peptide encompassing a sequence within the C-term region of human Beta-2 Adrenergic Receptor (pS355/S356). The exact sequence is proprietary.