

Anti-L1CAM (pS1181) Antibody
Rabbit polyclonal antibody to L1CAM (pS1181)
Catalog # AP61156

Specification

Anti-L1CAM (pS1181) Antibody - Product Information

Application	WB, IHC
Primary Accession	P32004
Other Accession	P11627
Reactivity	Human, Mouse, Rat, Zebrafish
Host	Rabbit
Clonality	Polyclonal
Calculated MW	140003

Anti-L1CAM (pS1181) Antibody - Additional Information

Gene ID 3897

Other Names

CAML1; MIC5; Neural cell adhesion molecule L1; N-CAM-L1; NCAM-L1; CD171

Target/Specificity

Recognizes endogenous levels of L1CAM (pS1181) protein.

Dilution

WB~~WB (1/500 - 1/1000), IH (1/50 - 1/200)

IHC~~1:100~500

Format

Liquid in 0.42% Potassium phosphate, 0.87% Sodium chloride, pH 7.3, 30% glycerol, and 0.09% (W/V) sodium azide.

Storage

Store at -20 °C. Stable for 12 months from date of receipt

Anti-L1CAM (pS1181) Antibody - Protein Information

Name L1CAM

Synonyms CAML1, MIC5

Function

Neural cell adhesion molecule involved in the dynamics of cell adhesion and in the generation of transmembrane signals at tyrosine kinase receptors. During brain development, critical in multiple processes, including neuronal migration, axonal growth and fasciculation, and synaptogenesis. In the mature brain, plays a role in the dynamics of neuronal structure and function, including synaptic plasticity.

Cellular Location

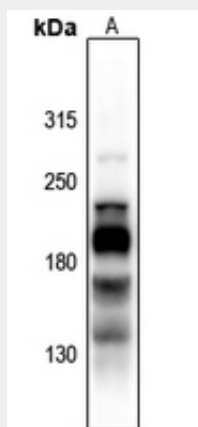
Cell membrane; Single-pass type I membrane protein {ECO:0000250|UniProtKB:Q05695}. Cell projection, growth cone {ECO:0000250|UniProtKB:Q05695}. Cell projection, axon. Cell projection, dendrite Note=Colocalized with SHTN1 in close apposition with actin filaments in filopodia and lamellipodia of axonal growth cones of hippocampal neurons (By similarity). In neurons, detected predominantly in axons and cell body, weak localization to dendrites (PubMed:20621658) {ECO:0000250|UniProtKB:Q05695, ECO:0000269|PubMed:20621658}

Anti-L1CAM (pS1181) Antibody - Protocols

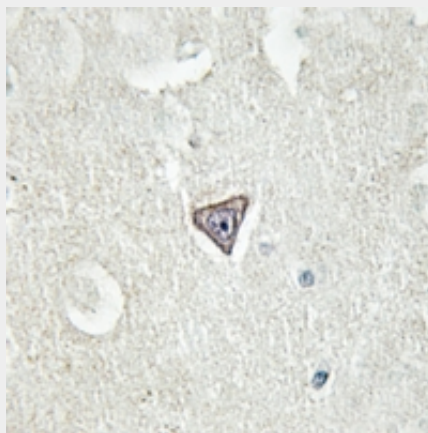
Provided below are standard protocols that you may find useful for product applications.

- [Western Blot](#)
- [Blocking Peptides](#)
- [Dot Blot](#)
- [Immunohistochemistry](#)
- [Immunofluorescence](#)
- [Immunoprecipitation](#)
- [Flow Cytometry](#)
- [Cell Culture](#)

Anti-L1CAM (pS1181) Antibody - Images



Western blot analysis of L1CAM (pS1181) expression in Myla2059 (A) whole cell lysates.



Immunohistochemical analysis of L1CAM (pS1181) staining in human brain formalin fixed paraffin

embedded tissue section. The section was pre-treated using heat mediated antigen retrieval with sodium citrate buffer (pH 6.0). The section was then incubated with the antibody at room temperature and detected using an HRP conjugated compact polymer system. DAB was used as the chromogen. The section was then counterstained with haematoxylin and mounted with DPX.

Anti-L1CAM (pS1181) Antibody - Background

KLH-conjugated synthetic peptide encompassing a sequence within the C-term region of human L1CAM (pS1181). The exact sequence is proprietary.