

Anti-PPAR alpha (pS21) Antibody
Rabbit polyclonal antibody to PPAR alpha (pS21)
Catalog # AP61163

Specification

Anti-PPAR alpha (pS21) Antibody - Product Information

Application	WB
Primary Accession	Q07869
Other Accession	P23204
Reactivity	Human, Mouse, Rat, Dog
Host	Rabbit
Clonality	Polyclonal
Calculated MW	52225

Anti-PPAR alpha (pS21) Antibody - Additional Information

Gene ID 5465

Other Names

NR1C1; PPAR; Peroxisome proliferator-activated receptor alpha; PPAR-alpha; Nuclear receptor subfamily 1 group C member 1

Target/Specificity

Recognizes endogenous levels of PPAR alpha (pS21) protein.

Dilution

WB~~WB (1/500 - 1/1000)

Format

Liquid in 0.42% Potassium phosphate, 0.87% Sodium chloride, pH 7.3, 30% glycerol, and 0.09% (W/V) sodium azide.

Storage

Store at -20 °C. Stable for 12 months from date of receipt

Anti-PPAR alpha (pS21) Antibody - Protein Information

Name PPARA

Synonyms NR1C1, PPAR

Function

Ligand-activated transcription factor. Key regulator of lipid metabolism. Activated by the endogenous ligand 1-palmitoyl-2-oleoyl-sn- glycerol-3-phosphocholine (16:0/18:1-GPC). Activated by oleylethanolamide, a naturally occurring lipid that regulates satiety. Receptor for peroxisome proliferators such as hypolipidemic drugs and fatty acids. Regulates the peroxisomal beta-oxidation pathway of fatty acids. Functions as a transcription activator for the ACOX1 and P450 genes. Transactivation activity requires heterodimerization with RXRA and is antagonized by

NR2C2. May be required for the propagation of clock information to metabolic pathways regulated by PER2.

Cellular Location

Nucleus.

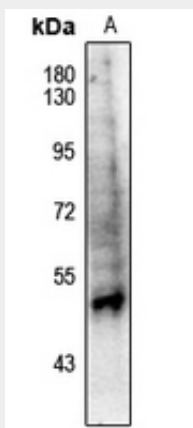
Tissue Location

Skeletal muscle, liver, heart and kidney. Expressed in monocytes (PubMed:28167758).

Anti-PPAR alpha (pS21) Antibody - Protocols

Provided below are standard protocols that you may find useful for product applications.

- [Western Blot](#)
- [Blocking Peptides](#)
- [Dot Blot](#)
- [Immunohistochemistry](#)
- [Immunofluorescence](#)
- [Immunoprecipitation](#)
- [Flow Cytometry](#)
- [Cell Culture](#)

Anti-PPAR alpha (pS21) Antibody - Images

Western blot analysis of PPAR alpha (pS21) expression in CT26 (A) whole cell lysates.

Anti-PPAR alpha (pS21) Antibody - Background

KLH-conjugated synthetic peptide encompassing a sequence within the N-term region of human PPAR alpha (pS21). The exact sequence is proprietary.