

**Anti-Topoisomerase 2 alpha (pS1106) Antibody**  
**Rabbit polyclonal antibody to Topoisomerase 2 alpha (pS1106)**  
**Catalog # AP61172**

**Specification**

---

**Anti-Topoisomerase 2 alpha (pS1106) Antibody - Product Information**

Application	WB, IHC
Primary Accession	<a href="#">P11388</a>
Other Accession	<a href="#">Q01320</a>
Reactivity	Human, Mouse, Rat, Pig
Host	Rabbit
Clonality	Polyclonal
Calculated MW	174385

**Anti-Topoisomerase 2 alpha (pS1106) Antibody - Additional Information**

**Gene ID** 7153

**Other Names**

TOP2; DNA topoisomerase 2-alpha; DNA topoisomerase II alpha isozyme

**Target/Specificity**

Recognizes endogenous levels of Topoisomerase 2 alpha (pS1106) protein.

**Dilution**

WB~~WB (1/500 - 1/1000), IH (1/50 - 1/200)

IHC~~1:100~500

**Format**

Liquid in 0.42% Potassium phosphate, 0.87% Sodium chloride, pH 7.3, 30% glycerol, and 0.09% (W/V) sodium azide.

**Storage**

Store at -20 °C. Stable for 12 months from date of receipt

**Anti-Topoisomerase 2 alpha (pS1106) Antibody - Protein Information**

**Name** TOP2A

**Synonyms** TOP2

**Function**

Key decatenating enzyme that alters DNA topology by binding to two double-stranded DNA molecules, generating a double-stranded break in one of the strands, passing the intact strand through the broken strand, and religating the broken strand (PubMed:<a href="http://www.uniprot.org/citations/17567603" target="\_blank">17567603</a>, PubMed:<a href="http://www.uniprot.org/citations/18790802" target="\_blank">18790802</a>, PubMed:<a href="http://www.uniprot.org/citations/22013166" target="\_blank">22013166</a>, PubMed:<a href="http://www.uniprot.org/citations/22013166" target="\_blank">22013166</a>)

href="http://www.uniprot.org/citations/22323612" target="\_blank">22323612</a>). May play a role in regulating the period length of BMAL1 transcriptional oscillation (By similarity).

**Cellular Location**

Cytoplasm. Nucleus, nucleoplasm. Nucleus. Nucleus, nucleolus

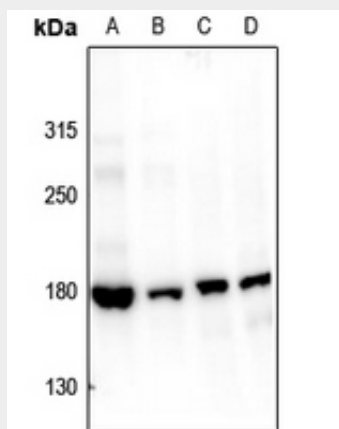
**Tissue Location**

Expressed in the tonsil, spleen, lymph node, thymus, skin, pancreas, testis, colon, kidney, liver, brain and lung (PubMed:9155056). Also found in high-grade lymphomas, squamous cell lung tumors and seminomas (PubMed:9155056)

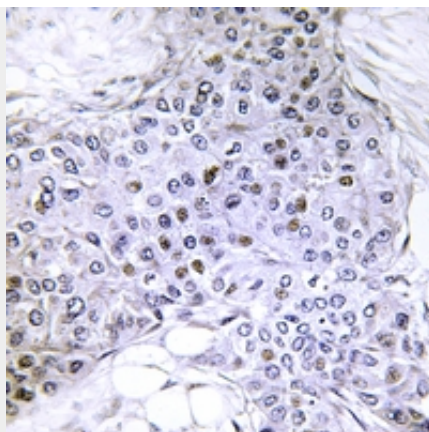
**Anti-Topoisomerase 2 alpha (pS1106) Antibody - Protocols**

Provided below are standard protocols that you may find useful for product applications.

- [Western Blot](#)
- [Blocking Peptides](#)
- [Dot Blot](#)
- [Immunohistochemistry](#)
- [Immunofluorescence](#)
- [Immunoprecipitation](#)
- [Flow Cytometry](#)
- [Cell Culture](#)

**Anti-Topoisomerase 2 alpha (pS1106) Antibody - Images**

Western blot analysis of Topoisomerase 2 alpha (pS1106) expression in Myla2059 (A), HuT78 (B), mouse testis (C), rat testis (D) whole cell lysates.



Immunohistochemical analysis of Topoisomerase 2 alpha (pS1106) staining in human breast cancer formalin fixed paraffin embedded tissue section. The section was pre-treated using heat mediated antigen retrieval with sodium citrate buffer (pH 6.0). The section was then incubated with the antibody at room temperature and detected using an HRP conjugated compact polymer system. DAB was used as the chromogen. The section was then counterstained with haematoxylin and mounted with DPX.

#### **Anti-Topoisomerase 2 alpha (pS1106) Antibody - Background**

KLH-conjugated synthetic peptide encompassing a sequence within the center region of human Topoisomerase 2 alpha (pS1106). The exact sequence is proprietary.