

Anti-CREB (pS111) Antibody
Rabbit polyclonal antibody to CREB (pS111)
Catalog # AP61179**Specification**

Anti-CREB (pS111) Antibody - Product Information

Application	WB
Primary Accession	P16220
Other Accession	Q01147
Reactivity	Human, Mouse, Rat
Host	Rabbit
Clonality	Polyclonal
Calculated MW	35136

Anti-CREB (pS111) Antibody - Additional Information**Gene ID** 1385**Other Names**

Cyclic AMP-responsive element-binding protein 1; CREB-1; cAMP-responsive element-binding protein 1

Target/Specificity

KLH-conjugated synthetic peptide encompassing a sequence within the center region of human CREB (pS111). The exact sequence is proprietary.

Dilution

WB~~WB (1/500 - 1/1000)

Format

Liquid in 0.42% Potassium phosphate, 0.87% Sodium chloride, pH 7.3, 30% glycerol, and 0.09% (W/V) sodium azide.

Storage

Store at -20 °C.Stable for 12 months from date of receipt

Anti-CREB (pS111) Antibody - Protein Information**Name** CREB1**Function**

Phosphorylation-dependent transcription factor that stimulates transcription upon binding to the DNA cAMP response element (CRE), a sequence present in many viral and cellular promoters (By similarity). Transcription activation is enhanced by the TORC coactivators which act independently of Ser-119 phosphorylation (PubMed:14536081). Involved in different cellular processes including the synchronization of circadian rhythmicity and the differentiation of adipose cells (By similarity). Regulates the expression of apoptotic and inflammatory response factors in cardiomyocytes in

response to ERFE-mediated activation of AKT signaling (By similarity).

Cellular Location

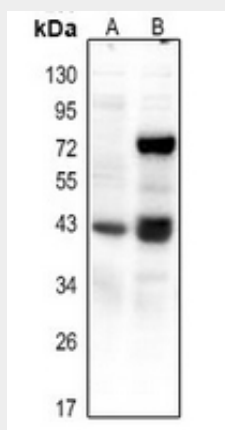
Nucleus {ECO:0000255|PROSITE-ProRule:PRU00312, ECO:0000255|PROSITE-ProRule:PRU00978, ECO:0000269|PubMed:12552083}

Anti-CREB (pS111) Antibody - Protocols

Provided below are standard protocols that you may find useful for product applications.

- [Western Blot](#)
- [Blocking Peptides](#)
- [Dot Blot](#)
- [Immunohistochemistry](#)
- [Immunofluorescence](#)
- [Immunoprecipitation](#)
- [Flow Cytometry](#)
- [Cell Culture](#)

Anti-CREB (pS111) Antibody - Images



Western blot analysis of CREB (pS111) expression in mouse kidney (A), rat kidney (B) whole cell lysates.

Anti-CREB (pS111) Antibody - Background

KLH-conjugated synthetic peptide encompassing a sequence within the center region of human CREB (pS111). The exact sequence is proprietary.