

Anti-ETS1 (pS282) Antibody
Rabbit polyclonal antibody to ETS1 (pS282)
Catalog # AP61183**Specification**

Anti-ETS1 (pS282) Antibody - Product Information

Application	WB
Primary Accession	P14921
Other Accession	P27577
Reactivity	Human, Mouse, Rat, Chicken
Host	Rabbit
Clonality	Polyclonal
Calculated MW	50408

Anti-ETS1 (pS282) Antibody - Additional Information**Gene ID** 2113**Other Names**

EWSR2; Protein C-ets-1; p54

Target/Specificity

KLH-conjugated synthetic peptide encompassing a sequence within the center region of human ETS1 (pS282). The exact sequence is proprietary.

Dilution

WB~~WB (1/500 - 1/1000)

Format

Liquid in 0.42% Potassium phosphate, 0.87% Sodium chloride, pH 7.3, 30% glycerol, and 0.09% (W/V) sodium azide.

Storage

Store at -20 °C. Stable for 12 months from date of receipt

Anti-ETS1 (pS282) Antibody - Protein Information**Name** ETS1**Synonyms** EWSR2**Function**

Transcription factor (PubMed: [10698492](http://www.uniprot.org/citations/10698492), PubMed: [11909962](http://www.uniprot.org/citations/11909962)). Directly controls the expression of cytokine and chemokine genes in a wide variety of different cellular contexts (PubMed: [20378371](http://www.uniprot.org/citations/20378371)). May control the differentiation, survival and proliferation of lymphoid cells (PubMed: [20378371](#)).

href="http://www.uniprot.org/citations/20378371" target="_blank">20378371). May also regulate angiogenesis through regulation of expression of genes controlling endothelial cell migration and invasion (PubMed:15247905, PubMed:15592518).

Cellular Location

Nucleus. Cytoplasm Note=Delocalizes from nucleus to cytoplasm when coexpressed with isoform Ets-1 p27.

Tissue Location

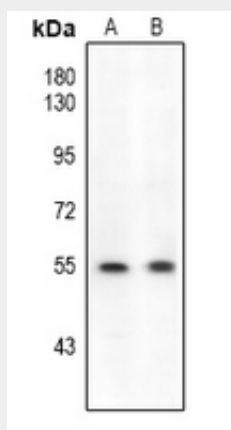
Highly expressed within lymphoid cells. Isoforms c- ETS-1A and Ets-1 p27 are both detected in all fetal tissues tested, but vary with tissue type in adult tissues. None is detected in brain or kidney.

Anti-ETS1 (pS282) Antibody - Protocols

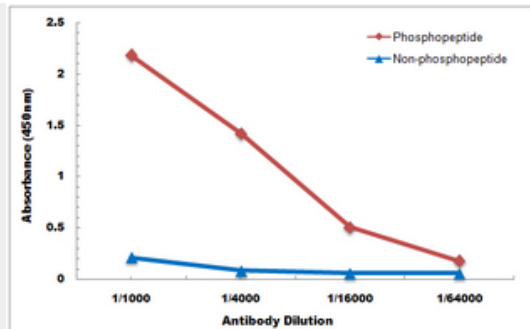
Provided below are standard protocols that you may find useful for product applications.

- [Western Blot](#)
- [Blocking Peptides](#)
- [Dot Blot](#)
- [Immunohistochemistry](#)
- [Immunofluorescence](#)
- [Immunoprecipitation](#)
- [Flow Cytometry](#)
- [Cell Culture](#)

Anti-ETS1 (pS282) Antibody - Images



Western blot analysis of ETS1 (pS282) expression in A549 (A), H1792 (B) whole cell lysates.



Direct ELISA antibody dose-response curve using Anti-ETS1 (pS282) Antibody. Antigen (phosphopeptide and non-phosphopeptide) concentration is 5 ug/ml. Goat Anti-Rabbit IgG (H&L) - HRP was used as the secondary antibody, and signal was developed by TMB substrate.

Anti-ETS1 (pS282) Antibody - Background

KLH-conjugated synthetic peptide encompassing a sequence within the center region of human ETS1 (pS282). The exact sequence is proprietary.