

Anti-Catalase Antibody
Rabbit polyclonal antibody to Catalase
Catalog # AP61186**Specification**

Anti-Catalase Antibody - Product Information

Application	WB, IHC
Primary Accession	P04040
Other Accession	P24270
Reactivity	Human, Mouse, Rat, Zebrafish, Bovine, Dog
Host	Rabbit
Clonality	Polyclonal
Calculated MW	59756

Anti-Catalase Antibody - Additional Information**Gene ID** 847**Other Names**
Catalase**Target/Specificity**

KLH-conjugated synthetic peptide encompassing a sequence within the center region of human Catalase. The exact sequence is proprietary.

Dilution

WB~~WB (1/500 - 1/1000), IH (1/50 - 1/200)
IHC~~1:100~500

Format

Liquid in 0.42% Potassium phosphate, 0.87% Sodium chloride, pH 7.3, 30% glycerol, and 0.09% (W/V) sodium azide.

Storage

Store at -20 °C. Stable for 12 months from date of receipt

Anti-Catalase Antibody - Protein Information**Name** CAT**Function**

Catalyzes the degradation of hydrogen peroxide (H₂O₂) generated by peroxisomal oxidases to water and oxygen, thereby protecting cells from the toxic effects of hydrogen peroxide (PubMed:7882369). Promotes growth of cells including T-cells, B-cells, myeloid leukemia cells, melanoma cells, mastocytoma cells and normal and transformed fibroblast cells (PubMed:7882369).

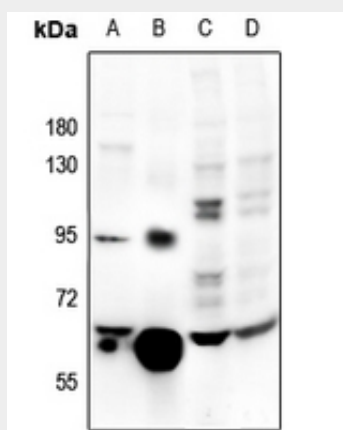
Cellular Location

Peroxisome matrix

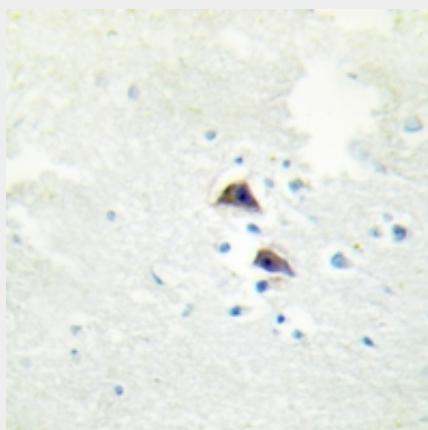
Anti-Catalase Antibody - Protocols

Provided below are standard protocols that you may find useful for product applications.

- [Western Blot](#)
- [Blocking Peptides](#)
- [Dot Blot](#)
- [Immunohistochemistry](#)
- [Immunofluorescence](#)
- [Immunoprecipitation](#)
- [Flow Cytometry](#)
- [Cell Culture](#)

Anti-Catalase Antibody - Images

Western blot analysis of Catalase expression in rat prostate (A), mouse kidney (B), A549 (C), LO2 (D) whole cell lysates.



Immunohistochemical analysis of Catalase staining in human brain formalin fixed paraffin embedded tissue section. The section was pre-treated using heat mediated antigen retrieval with sodium citrate buffer (pH 6.0). The section was then incubated with the antibody at room temperature and detected using an HRP conjugated compact polymer system. DAB was used as the chromogen. The section was then counterstained with haematoxylin and mounted with DPX.

Anti-Catalase Antibody - Background

KLH-conjugated synthetic peptide encompassing a sequence within the center region of human Catalase. The exact sequence is proprietary.