

**Anti-NDUFC2 Antibody**  
**Rabbit polyclonal antibody to NDUFC2**  
**Catalog # AP61194****Specification**

---

**Anti-NDUFC2 Antibody - Product Information**

Application	<b>WB, IHC</b>
Primary Accession	<a href="#">O95298</a>
Other Accession	<a href="#">O9CQ54</a>
Reactivity	<b>Human, Mouse, Rat</b>
Host	<b>Rabbit</b>
Clonality	<b>Polyclonal</b>
Calculated MW	<b>14188</b>

**Anti-NDUFC2 Antibody - Additional Information****Gene ID** 4718**Other Names**

NADH dehydrogenase [ubiquinone] 1 subunit C2; Complex I-B14.5b; CI-B14.5b; Human lung cancer oncogene 1 protein; HLC-1; NADH-ubiquinone oxidoreductase subunit B14.5b

**Target/Specificity**

KLH-conjugated synthetic peptide encompassing a sequence within the center region of human NDUFC2. The exact sequence is proprietary.

**Dilution**

WB~~WB (1/500 - 1/1000), IH (1/50 - 1/200)

IHC~~1:100~500

**Format**

Liquid in 0.42% Potassium phosphate, 0.87% Sodium chloride, pH 7.3, 30% glycerol, and 0.09% (W/V) sodium azide.

**Storage**

Store at -20 °C.Stable for 12 months from date of receipt

**Anti-NDUFC2 Antibody - Protein Information****Name** NDUFC2 ([HGNC:7706](#))**Function**

Accessory subunit of the mitochondrial membrane respiratory chain NADH dehydrogenase (Complex I), that is believed not to be involved in catalysis but required for the complex assembly. Complex I functions in the transfer of electrons from NADH to the respiratory chain. The immediate electron acceptor for the enzyme is believed to be ubiquinone.

**Cellular Location**

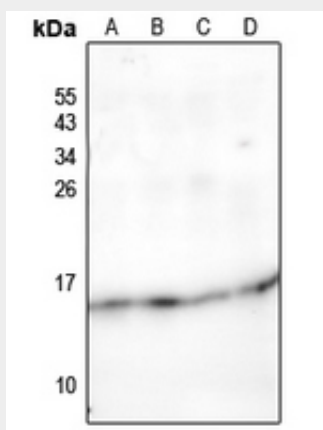
Mitochondrion inner membrane; Single-pass membrane protein; Matrix side

### Anti-NDUFC2 Antibody - Protocols

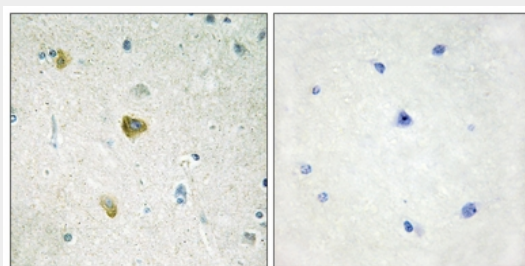
Provided below are standard protocols that you may find useful for product applications.

- [Western Blot](#)
- [Blocking Peptides](#)
- [Dot Blot](#)
- [Immunohistochemistry](#)
- [Immunofluorescence](#)
- [Immunoprecipitation](#)
- [Flow Cytometry](#)
- [Cell Culture](#)

### Anti-NDUFC2 Antibody - Images



Western blot analysis of NDUFC2 expression in A375 (A), PC3 (B), H9C2 (C), AML12 (D) whole cell lysates.



Immunohistochemical analysis of NDUFC2 staining in human brain formalin fixed paraffin embedded tissue section. The section was pre-treated using heat mediated antigen retrieval with sodium citrate buffer (pH 6.0). The section was then incubated with the antibody at room temperature and detected using an HRP conjugated compact polymer system. DAB was used as the chromogen. The section was then counterstained with haematoxylin and mounted with DPX.

### Anti-NDUFC2 Antibody - Background

KLH-conjugated synthetic peptide encompassing a sequence within the center region of human NDUFC2. The exact sequence is proprietary.