

**Anti-OB Cadherin Antibody**  
**Rabbit polyclonal antibody to OB Cadherin**  
**Catalog # AP61201****Specification**

---

**Anti-OB Cadherin Antibody - Product Information**

Application	WB
Primary Accession	<a href="#">P55287</a>
Other Accession	<a href="#">P55288</a>
Reactivity	Human, Mouse, Rat, Monkey
Host	Rabbit
Clonality	Polyclonal
Calculated MW	87965

**Anti-OB Cadherin Antibody - Additional Information****Gene ID** 1009**Other Names**

Cadherin-11; OSF-4; Osteoblast cadherin; OB-cadherin

**Target/Specificity**

KLH-conjugated synthetic peptide encompassing a sequence within the center region of human OB Cadherin. The exact sequence is proprietary.

**Dilution**

WB~~WB (1/500 - 1/1000)

**Format**

Liquid in 0.42% Potassium phosphate, 0.87% Sodium chloride, pH 7.3, 30% glycerol, and 0.09% (W/V) sodium azide.

**Storage**

Store at -20 °C. Stable for 12 months from date of receipt

**Anti-OB Cadherin Antibody - Protein Information****Name** CDH11**Function**

Cadherins are calcium-dependent cell adhesion proteins. They preferentially interact with themselves in a homophilic manner in connecting cells; cadherins may thus contribute to the sorting of heterogeneous cell types. Required for proper focal adhesion assembly (PubMed: [33811546](http://www.uniprot.org/citations/33811546)). Involved in the regulation of cell migration (PubMed: [33811546](http://www.uniprot.org/citations/33811546)).

**Cellular Location**

Cell membrane; Single-pass type I membrane protein

#### **Tissue Location**

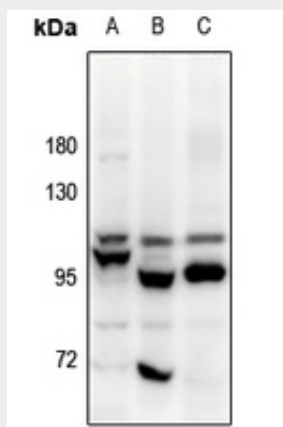
Expressed mainly in brain but also found in other tissues. Expressed in neuroblasts. In the embryo from 67 to 72 days of gestation, detected at high levels in facial mesenchyme including the central palatal mesenchyme, dental mesenchyme, the eye and optic muscle, and the tongue (at protein level) (PubMed:33811546)

#### **Anti-OB Cadherin Antibody - Protocols**

Provided below are standard protocols that you may find useful for product applications.

- [Western Blot](#)
- [Blocking Peptides](#)
- [Dot Blot](#)
- [Immunohistochemistry](#)
- [Immunofluorescence](#)
- [Immunoprecipitation](#)
- [Flow Cytometry](#)
- [Cell Culture](#)

#### **Anti-OB Cadherin Antibody - Images**



Western blot analysis of OB Cadherin expression in A2780 (A), HeLa (B), C6 (C) whole cell lysates.

#### **Anti-OB Cadherin Antibody - Background**

KLH-conjugated synthetic peptide encompassing a sequence within the center region of human OB Cadherin. The exact sequence is proprietary.