

Anti-RCL Antibody
Rabbit polyclonal antibody to RCL
Catalog # AP61208**Specification**

Anti-RCL Antibody - Product Information

Application	WB
Primary Accession	O43598
Other Accession	Q80VJ3
Reactivity	Human, Mouse, Rat
Host	Rabbit
Clonality	Polyclonal
Calculated MW	19108

Anti-RCL Antibody - Additional Information**Gene ID** 10591**Other Names**

C6orf108; RCL; 2'-deoxynucleoside 5'-phosphate N-hydrolase 1; c-Myc-responsive protein RCL

Target/Specificity

Recognizes endogenous levels of RCL protein.

Dilution

WB~~WB (1/500 - 1/1000)

Format

Liquid in 0.42% Potassium phosphate, 0.87% Sodium chloride, pH 7.3, 30% glycerol, and 0.09% (W/V) sodium azide.

Storage

Store at -20 °C. Stable for 12 months from date of receipt

Anti-RCL Antibody - Protein Information**Name** DNPH1 ([HGNC:21218](#))**Function**

Part of a nucleotide salvage pathway that eliminates epigenetically modified 5-hydroxymethyl-dCMP (hmdCMP) in a two-step process entailing deamination to cytotoxic 5-hydroxymethyl-dUMP (hmdUMP), followed by its hydrolysis into 5-hydroxymethyluracil (hmU) and 2-deoxy-D-ribose 5-phosphate (deoxyribosephosphate) (PubMed:33833118). Catalyzes the second step in that pathway, the hydrolysis of the N-glycosidic bond in hmdUMP, degrading this cytotoxic nucleotide to avoid its genomic integration (PubMed:33833118).

Cellular Location

Cytoplasm. Nucleus

Tissue Location

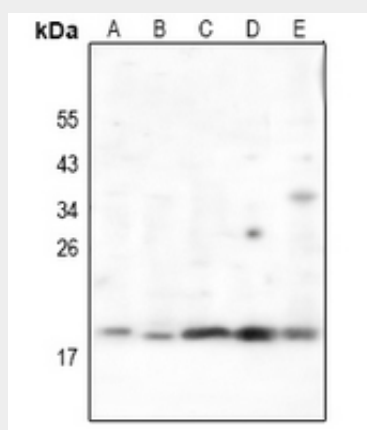
Expressed at low levels in brain, colon, lung, peripheral blood leukocytes, placenta, small intestine, and thymus Expressed at high levels in heart, kidney, liver, skeletal muscle and spleen.

Overexpressed in a significant proportion of breast cancers

Anti-RCL Antibody - Protocols

Provided below are standard protocols that you may find useful for product applications.

- [Western Blot](#)
- [Blocking Peptides](#)
- [Dot Blot](#)
- [Immunohistochemistry](#)
- [Immunofluorescence](#)
- [Immunoprecipitation](#)
- [Flow Cytometry](#)
- [Cell Culture](#)

Anti-RCL Antibody - Images

Western blot analysis of RCL expression in HepG2 (A), HEK293T (B), LO2 (C), PC12 (D), AML12 (E) whole cell lysates.

Anti-RCL Antibody - Background

KLH-conjugated synthetic peptide encompassing a sequence within the N-term region of human RCL. The exact sequence is proprietary.