

Anti-Cystatin 11 Antibody
Rabbit polyclonal antibody to Cystatin 11
Catalog # AP61209**Specification**

Anti-Cystatin 11 Antibody - Product Information

Application	WB
Primary Accession	O9H112
Other Accession	O9D269
Reactivity	Human, Mouse, Rat
Host	Rabbit
Clonality	Polyclonal
Calculated MW	16506

Anti-Cystatin 11 Antibody - Additional Information**Gene ID** 140880**Other Names**

CST8L; Cystatin-11

Target/Specificity

KLH-conjugated synthetic peptide encompassing a sequence within the C-term region of human Cystatin 11. The exact sequence is proprietary.

Dilution

WB~~WB (1/500 - 1/1000)

Format

Liquid in 0.42% Potassium phosphate, 0.87% Sodium chloride, pH 7.3, 30% glycerol, and 0.09% (W/V) sodium azide.

Storage

Store at -20 °C. Stable for 12 months from date of receipt

Anti-Cystatin 11 Antibody - Protein Information**Name** CST11**Synonyms** CST8L**Function**

Has antibacterial activity against the Gram-negative bacteria E.coli. May play a role in sperm maturation and fertilization.

Cellular Location

Secreted. Note=Probably secreted into the epididymis lumen, where it localizes to the outer surface of sperm. Specifically localizes to the postacrosomal and tail regions of sperm.

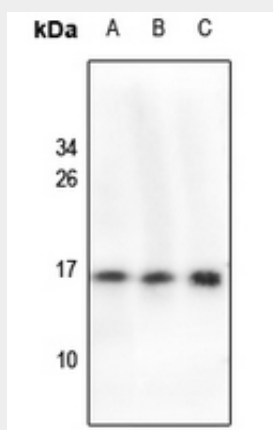
Tissue Location

Detected in the epithelium and lumen of the epididymis, and in sperm (at protein level)

Anti-Cystatin 11 Antibody - Protocols

Provided below are standard protocols that you may find useful for product applications.

- [Western Blot](#)
- [Blocking Peptides](#)
- [Dot Blot](#)
- [Immunohistochemistry](#)
- [Immunofluorescence](#)
- [Immunoprecipitation](#)
- [Flow Cytometry](#)
- [Cell Culture](#)

Anti-Cystatin 11 Antibody - Images

Western blot analysis of Cystatin 11 expression in rat heart (A), mouse kidney (B), rat kidney (C) whole cell lysates.

Anti-Cystatin 11 Antibody - Background

KLH-conjugated synthetic peptide encompassing a sequence within the C-term region of human Cystatin 11. The exact sequence is proprietary.