

Anti-MRPS36 Antibody
Rabbit polyclonal antibody to MRPS36
Catalog # AP61219**Specification**

Anti-MRPS36 Antibody - Product Information

Application	WB, IH
Primary Accession	P82909
Other Accession	O9CQX8
Reactivity	Human, Mouse, Rat
Host	Rabbit
Clonality	Polyclonal
Calculated MW	11466

Anti-MRPS36 Antibody - Additional Information**Gene ID** 92259**Other Names**

28S ribosomal protein S36 mitochondrial; MRP-S36; S36mt

Target/Specificity

Recognizes endogenous levels of MRPS36 protein.

Dilution

WB~~WB (1/500 - 1/1000), IH (1/50 - 1/200)

IH~~WB (1/500 - 1/1000), IH (1/50 - 1/200)

Format

Liquid in 0.42% Potassium phosphate, 0.87% Sodium chloride, pH 7.3, 30% glycerol, and 0.09% (W/V) sodium azide.

Storage

Store at -20 °C. Stable for 12 months from date of receipt

Anti-MRPS36 Antibody - Protein Information**Name** KGD4 ([HGNC:16631](#))**Synonyms** MRPS36**Function**

Molecular adapter that is necessary to form a stable 2- oxoglutarate dehydrogenase enzyme complex (OGDHC). Enables the specific recruitment of E3 subunit to E2 subunit in the 2-oxoglutarate dehydrogenase complex (OGDHC).

Cellular Location

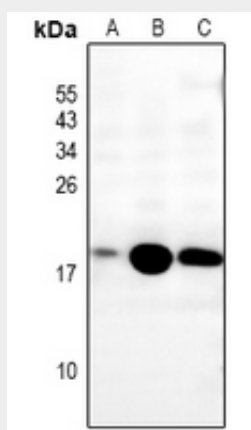
Mitochondrion {ECO:0000250|UniProtKB:P82908}.

Anti-MRPS36 Antibody - Protocols

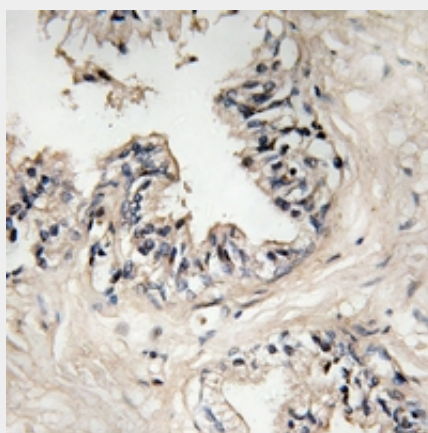
Provided below are standard protocols that you may find useful for product applications.

- [Western Blot](#)
- [Blocking Peptides](#)
- [Dot Blot](#)
- [Immunohistochemistry](#)
- [Immunofluorescence](#)
- [Immunoprecipitation](#)
- [Flow Cytometry](#)
- [Cell Culture](#)

Anti-MRPS36 Antibody - Images



Western blot analysis of MRPS36 expression in rat brain (A), mouse kidney (B), rat kidney (C) whole cell lysates.



Immunohistochemical analysis of MRPS36 staining in human prostate cancer formalin fixed paraffin embedded tissue section. The section was pre-treated using heat mediated antigen retrieval with sodium citrate buffer (pH 6.0). The section was then incubated with the antibody at room temperature and detected using an HRP conjugated compact polymer system. DAB was used as the chromogen. The section was then counterstained with haematoxylin and mounted with DPX.

Anti-MRPS36 Antibody - Background

KLH-conjugated synthetic peptide encompassing a sequence within the N-term region of human MRPS36. The exact sequence is proprietary.