

Anti-Kappa Opioid Receptor Antibody
Rabbit polyclonal antibody to Kappa Opioid Receptor
Catalog # AP61232**Specification**

Anti-Kappa Opioid Receptor Antibody - Product Information

Application	WB
Primary Accession	P41145
Other Accession	P33534
Reactivity	Human, Mouse, Rat
Host	Rabbit
Clonality	Polyclonal
Calculated MW	42645

Anti-Kappa Opioid Receptor Antibody - Additional Information**Gene ID** 4986**Other Names**

OPRK; Kappa-type opioid receptor; K-OR-1; KOR-1

Target/Specificity

Recognizes endogenous levels of Kappa Opioid Receptor protein.

Dilution

WB~~WB (1/500 - 1/1000)

Format

Liquid in 0.42% Potassium phosphate, 0.87% Sodium chloride, pH 7.3, 30% glycerol, and 0.09% (W/V) sodium azide.

Storage

Store at -20 °C. Stable for 12 months from date of receipt

Anti-Kappa Opioid Receptor Antibody - Protein Information**Name** OPRK1**Synonyms** OPRK**Function**

G-protein coupled opioid receptor that functions as a receptor for endogenous alpha-neoendorphins and dynorphins, but has low affinity for beta-endorphins. Also functions as a receptor for various synthetic opioids and for the psychoactive diterpene salvinorin A. Ligand binding causes a conformation change that triggers signaling via guanine nucleotide-binding proteins (G proteins) and modulates the activity of down-stream effectors, such as adenylate cyclase. Signaling leads to the inhibition of adenylate cyclase activity. Inhibits neurotransmitter release by reducing calcium ion currents and increasing potassium ion conductance. Plays a role in

the perception of pain. Plays a role in mediating reduced physical activity upon treatment with synthetic opioids. Plays a role in the regulation of salivation in response to synthetic opioids. May play a role in arousal and regulation of autonomic and neuroendocrine functions.

Cellular Location

Cell membrane; Multi-pass membrane protein

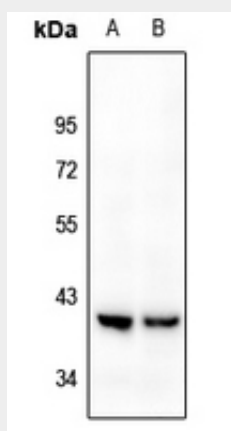
Tissue Location

Detected in brain and placenta.

Anti-Kappa Opioid Receptor Antibody - Protocols

Provided below are standard protocols that you may find useful for product applications.

- [Western Blot](#)
- [Blocking Peptides](#)
- [Dot Blot](#)
- [Immunohistochemistry](#)
- [Immunofluorescence](#)
- [Immunoprecipitation](#)
- [Flow Cytometry](#)
- [Cell Culture](#)

Anti-Kappa Opioid Receptor Antibody - Images

Western blot analysis of Kappa Opioid Receptor expression in C6 (A), HeLa (B) whole cell lysates.

Anti-Kappa Opioid Receptor Antibody - Background

KLH-conjugated synthetic peptide encompassing a sequence within the C-term region of human Kappa Opioid Receptor. The exact sequence is proprietary.