

**Anti-IL-11 Antibody**  
**Rabbit polyclonal antibody to IL-11**  
**Catalog # AP61233****Specification**

---

**Anti-IL-11 Antibody - Product Information**

|                   |                        |
|-------------------|------------------------|
| Application       | WB, IHC                |
| Primary Accession | <a href="#">P20809</a> |
| Other Accession   | <a href="#">P47873</a> |
| Reactivity        | Human, Mouse, Rat      |
| Host              | Rabbit                 |
| Clonality         | Polyclonal             |
| Calculated MW     | 21429                  |

**Anti-IL-11 Antibody - Additional Information****Gene ID** 3589**Other Names**

Interleukin-11; IL-11; Adipogenesis inhibitory factor; AGIF; Oprelvekin

**Target/Specificity**

Recognizes endogenous levels of IL-11 protein.

**Dilution**

WB~~WB (1/500 - 1/1000), IH (1/50 - 1/200)

IHC~~1:100~500

**Format**

Liquid in 0.42% Potassium phosphate, 0.87% Sodium chloride, pH 7.3, 30% glycerol, and 0.09% (W/V) sodium azide.

**Storage**

Store at -20 °C. Stable for 12 months from date of receipt

**Anti-IL-11 Antibody - Protein Information****Name** IL11 ([HGNC:5966](#))**Function**

Cytokine that stimulates the proliferation of hematopoietic stem cells and megakaryocyte progenitor cells and induces megakaryocyte maturation resulting in increased platelet production (PubMed:<a href="http://www.uniprot.org/citations/2145578" target="\_blank">2145578</a>). Also promotes the proliferation of hepatocytes in response to liver damage. Binding to its receptor formed by IL6ST and IL11RA activates a signaling cascade that promotes cell proliferation (PubMed:<a href="http://www.uniprot.org/citations/12919066" target="\_blank">12919066</a>). Signaling leads to the activation of intracellular protein kinases and the phosphorylation of STAT3. The interaction with the membrane-bound IL11RA and IL6ST stimulates 'classic signaling', whereas

the binding of IL11 and soluble IL11RA to IL6ST stimulates 'trans-signaling' (PubMed:<a href="http://www.uniprot.org/citations/30279168" target="\_blank">30279168</a>).

#### Cellular Location

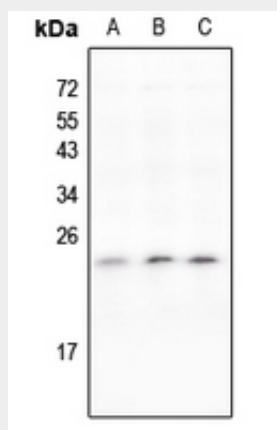
Secreted

#### Anti-IL-11 Antibody - Protocols

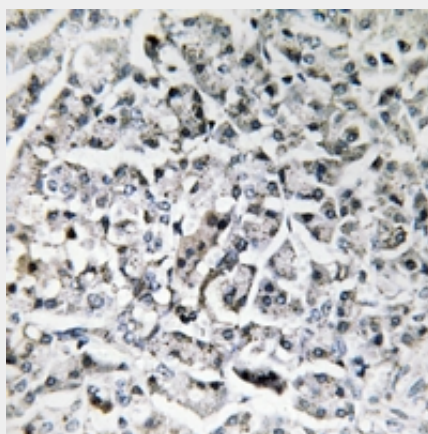
Provided below are standard protocols that you may find useful for product applications.

- [Western Blot](#)
- [Blocking Peptides](#)
- [Dot Blot](#)
- [Immunohistochemistry](#)
- [Immunofluorescence](#)
- [Immunoprecipitation](#)
- [Flow Cytometry](#)
- [Cell Culture](#)

#### Anti-IL-11 Antibody - Images



Western blot analysis of IL-11 expression in 3T3L1 (A), Hela (B), PC12 (C) whole cell lysates.



Immunohistochemical analysis of IL-11 staining in human pancreas formalin fixed paraffin embedded tissue section. The section was pre-treated using heat mediated antigen retrieval with sodium citrate buffer (pH 6.0). The section was then incubated with the antibody at room

temperature and detected using an HRP conjugated compact polymer system. DAB was used as the chromogen. The section was then counterstained with haematoxylin and mounted with DPX.

**Anti-IL-11 Antibody - Background**

KLH-conjugated synthetic peptide encompassing a sequence within the N-term region of human IL-11. The exact sequence is proprietary.