

Anti-IL-20 Antibody
Rabbit polyclonal antibody to IL-20
Catalog # AP61234**Specification**

Anti-IL-20 Antibody - Product Information

Application	WB
Primary Accession	O9NYY1
Other Accession	O9JKV9
Reactivity	Human, Mouse, Rat
Host	Rabbit
Clonality	Polyclonal
Calculated MW	20072

Anti-IL-20 Antibody - Additional Information**Gene ID** 50604**Other Names**

ZCYTO10; Interleukin-20; IL-20; Cytokine Zcyto10

Target/Specificity

Recognizes endogenous levels of IL-20 protein.

Dilution

WB~~WB (1/500 - 1/1000)

Format

Liquid in 0.42% Potassium phosphate, 0.87% Sodium chloride, pH 7.3, 30% glycerol, and 0.09% (W/V) sodium azide.

Storage

Store at -20 °C. Stable for 12 months from date of receipt

Anti-IL-20 Antibody - Protein Information**Name** IL20**Synonyms** ZCYTO10**Function**

Pro-inflammatory and angiogenic cytokine mainly secreted by monocytes and skin keratinocytes that plays crucial roles in immune responses, regulation of inflammatory responses, hemopoiesis, as well as epidermal cell and keratinocyte differentiation (PubMed:17277128, PubMed:34403503). Enhances tissue remodeling and wound-healing activities and restores the homeostasis of epithelial layers during infection and inflammatory responses to maintain tissue integrity (PubMed:17277128). Affects multiple actin-mediated functions in activated neutrophils leading to inhibition of phagocytosis, granule exocytosis, and migration (PubMed:28424238). Exert its effects via the type I IL-20 receptor complex consisting of IL20RA and IL20RB (PubMed:11706020). Alternatively, can mediate its activity through a second receptor complex called type II IL-20 receptor complex composed of IL22RA1 and IL20RB (PubMed:11564763). Acts as an arteriogenic and vascular remodeling factory by activating a range of signaling processes including phosphorylations of JAK2 and STAT5 as well as activation of the serine and threonine kinases AKT and ERK1/2 (By similarity). Alternatively, can activate STAT3 phosphorylation and transcriptional activity in a JAK2, ERK1/2 and p38 MAPK-dependent manner in keratinocytes (PubMed:23614738).

Cellular Location

Secreted.

Tissue Location

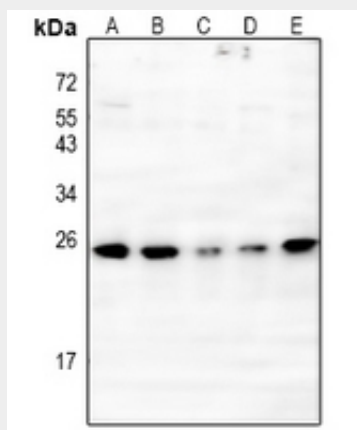
Expressed in most tissues and five major cell types: epithelial cells (primarily skin, buccal mucosa, tongue, nasal mucosa, lung, ureter, breast, prostate, fallopian tube, and adrenal gland), myoepithelial cells (mainly prostate), endothelial cells (mainly in small vessels or capillaries), macrophages, and skeletal muscle. Isoform 2 was detected in the lung tissue only

Anti-IL-20 Antibody - Protocols

Provided below are standard protocols that you may find useful for product applications.

- [Western Blot](#)
- [Blocking Peptides](#)
- [Dot Blot](#)
- [Immunohistochemistry](#)
- [Immunofluorescence](#)
- [Immunoprecipitation](#)
- [Flow Cytometry](#)
- [Cell Culture](#)

Anti-IL-20 Antibody - Images



Western blot analysis of IL-20 expression in A375 (A), PC3 (B), MCF7 (C), PMVEC (D), 3T3L1 (E)

whole cell lysates.

Anti-IL-20 Antibody - Background

KLH-conjugated synthetic peptide encompassing a sequence within the center region of human IL-20. The exact sequence is proprietary.