

**Anti-CXCL3 Antibody**  
**Rabbit polyclonal antibody to CXCL3**  
**Catalog # AP61235****Specification**

---

**Anti-CXCL3 Antibody - Product Information**

Application	WB, IHC
Primary Accession	<a href="#">P19876</a>
Other Accession	<a href="#">Q6W5C0</a>
Reactivity	Human, Mouse, Rat
Host	Rabbit
Clonality	Polyclonal
Calculated MW	11342

**Anti-CXCL3 Antibody - Additional Information****Gene ID** 2921**Other Names**

GRO3; GROG; SCYB3; C-X-C motif chemokine 3; GRO-gamma(1-73); Growth-regulated protein gamma; GRO-gamma; Macrophage inflammatory protein 2-beta; MIP2-beta

**Target/Specificity**

Recognizes endogenous levels of CXCL3 protein.

**Dilution**

WB~~WB (1/500 - 1/1000), IH (1/50 - 1/200)

IHC~~1:100~500

**Format**

Liquid in 0.42% Potassium phosphate, 0.87% Sodium chloride, pH 7.3, 30% glycerol, and 0.09% (W/V) sodium azide.

**Storage**

Store at -20 °C.Stable for 12 months from date of receipt

**Anti-CXCL3 Antibody - Protein Information****Name** CXCL3**Synonyms** GRO3, GROG, SCYB3**Function**

Ligand for CXCR2 (By similarity). Has chemotactic activity for neutrophils. May play a role in inflammation and exert its effects on endothelial cells in an autocrine fashion. In vitro, the processed form GRO-gamma(5-73) shows a fivefold higher chemotactic activity for neutrophilic granulocytes.

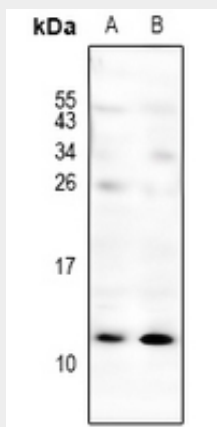
**Cellular Location**  
Secreted.

### Anti-CXCL3 Antibody - Protocols

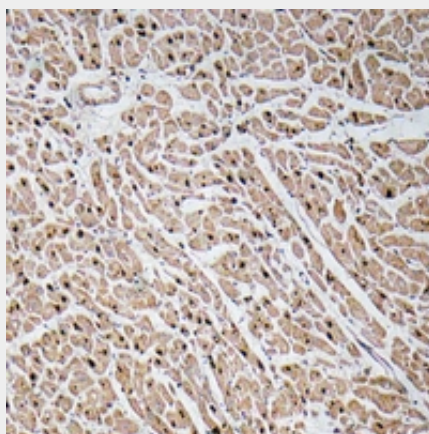
Provided below are standard protocols that you may find useful for product applications.

- [Western Blot](#)
- [Blocking Peptides](#)
- [Dot Blot](#)
- [Immunohistochemistry](#)
- [Immunofluorescence](#)
- [Immunoprecipitation](#)
- [Flow Cytometry](#)
- [Cell Culture](#)

### Anti-CXCL3 Antibody - Images



Western blot analysis of CXCL3 expression in H9C2 (A), AML12 (B) whole cell lysates.



Immunohistochemical analysis of CXCL3 staining in human heart formalin fixed paraffin embedded tissue section. The section was pre-treated using heat mediated antigen retrieval with sodium citrate buffer (pH 6.0). The section was then incubated with the antibody at room temperature and detected using an HRP conjugated compact polymer system. DAB was used as the chromogen. The section was then counterstained with haematoxylin and mounted with DPX.

### Anti-CXCL3 Antibody - Background

KLH-conjugated synthetic peptide encompassing a sequence within the C-term region of human CXCL3. The exact sequence is proprietary.