

**Anti-Occludin Antibody**  
**Rabbit polyclonal antibody to Occludin**  
**Catalog # AP61238****Specification**

---

**Anti-Occludin Antibody - Product Information**

Application	WB
Primary Accession	<a href="#">Q16625</a>
Other Accession	<a href="#">Q61146</a>
Reactivity	Human, Mouse, Rat, Drosophila
Host	Rabbit
Clonality	Polyclonal
Calculated MW	59144

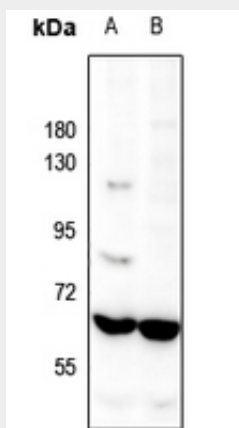
**Anti-Occludin Antibody - Additional Information****Gene ID** 100506658**Other Names**  
Occludin**Target/Specificity**  
Recognizes endogenous levels of Occludin protein.**Dilution**  
WB~~WB (1/500 - 1/1000)**Format**  
Liquid in 0.42% Potassium phosphate, 0.87% Sodium chloride, pH 7.3, 30% glycerol, and 0.09% (W/V) sodium azide.**Storage**  
Store at -20 °C. Stable for 12 months from date of receipt**Anti-Occludin Antibody - Protein Information****Name** OCLN**Function**  
May play a role in the formation and regulation of the tight junction (TJ) paracellular permeability barrier. It is able to induce adhesion when expressed in cells lacking tight junctions.**Cellular Location**  
Cell membrane; Multi-pass membrane protein. Cell junction, tight junction**Tissue Location**  
Localized at tight junctions of both epithelial and endothelial cells. Highly expressed in kidney. Not detected in testis

## Anti-Occludin Antibody - Protocols

Provided below are standard protocols that you may find useful for product applications.

- [Western Blot](#)
- [Blocking Peptides](#)
- [Dot Blot](#)
- [Immunohistochemistry](#)
- [Immunofluorescence](#)
- [Immunoprecipitation](#)
- [Flow Cytometry](#)
- [Cell Culture](#)

## Anti-Occludin Antibody - Images



Western blot analysis of Occludin expression in mouse kidney (A), rat kidney (B) whole cell lysates.

## Anti-Occludin Antibody - Background

KLH-conjugated synthetic peptide encompassing a sequence within the C-term region of human Occludin. The exact sequence is proprietary.