

Anti-RAMP3 Antibody
Rabbit polyclonal antibody to RAMP3
Catalog # AP61241**Specification**

Anti-RAMP3 Antibody - Product Information

Application	WB
Primary Accession	O60896
Other Accession	Q9WUP1
Reactivity	Human, Mouse, Rat
Host	Rabbit
Clonality	Polyclonal
Calculated MW	16518

Anti-RAMP3 Antibody - Additional Information**Gene ID** 10268**Other Names**

Receptor activity-modifying protein 3; Calcitonin-receptor-like receptor activity-modifying protein 3; CRLR activity-modifying protein 3

Target/Specificity

KLH-conjugated synthetic peptide encompassing a sequence within the center region of human RAMP3. The exact sequence is proprietary.

Dilution

WB~~WB (1/500 - 1/1000)

Format

Liquid in 0.42% Potassium phosphate, 0.87% Sodium chloride, pH 7.3, 30% glycerol, and 0.09% (W/V) sodium azide.

Storage

Store at -20 °C. Stable for 12 months from date of receipt

Anti-RAMP3 Antibody - Protein Information**Name** RAMP3 ([HGNC:9845](#))**Function**

Accessory protein that interacts with and modulates the function of G-protein coupled receptors including calcitonin gene-related peptide type 1 receptor (CALCRL), calcitonin receptor (CALCR) and G-protein coupled estrogen receptor 1 (GPER1) (PubMed:23674134, PubMed:9620797). Required for the transport of CALCRL and GPER1 receptors to the plasma membrane (PubMed:23674134, PubMed:23674134).

<http://www.uniprot.org/citations/9620797> target="_blank">9620797). Plays a role in cardioprotection by reducing cardiac hypertrophy and perivascular fibrosis in a GPER1-dependent manner (PubMed:23674134). Together with CALCRL, form a receptor complex for adrenomedullin/ADM and intermedin/ADM2 (PubMed:32296767). Together with CALCR, act as a receptor complex for amylin/IAPP (PubMed:35324283).

Cellular Location

Cell membrane; Single-pass type I membrane protein. Membrane; Single-pass type I membrane protein. Note=Moves from intracellular puncta to the plasma membrane in a RAMP3-dependent manner

Tissue Location

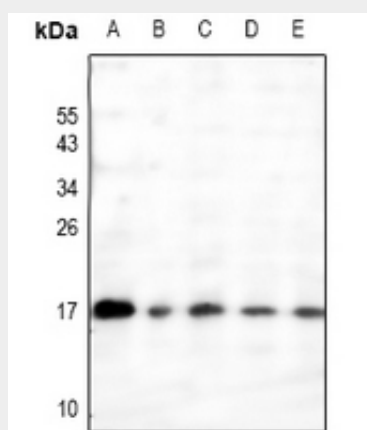
Strongly expressed in lung, breast, immune system and fetal tissues.

Anti-RAMP3 Antibody - Protocols

Provided below are standard protocols that you may find useful for product applications.

- [Western Blot](#)
- [Blocking Peptides](#)
- [Dot Blot](#)
- [Immunohistochemistry](#)
- [Immunofluorescence](#)
- [Immunoprecipitation](#)
- [Flow Cytometry](#)
- [Cell Culture](#)

Anti-RAMP3 Antibody - Images



Western blot analysis of RAMP3 expression in H1792 (A), MCF7 (B), Myla2059 (C), 3T3L1 (D), PMVEC (E) whole cell lysates.

Anti-RAMP3 Antibody - Background

KLH-conjugated synthetic peptide encompassing a sequence within the center region of human RAMP3. The exact sequence is proprietary.