

Anti-CD109 Antibody
Rabbit polyclonal antibody to CD109
Catalog # AP61245**Specification**

Anti-CD109 Antibody - Product Information

Application	WB, IH
Primary Accession	Q6YHK3
Reactivity	Human
Host	Rabbit
Clonality	Polyclonal
Calculated MW	161689

Anti-CD109 Antibody - Additional Information**Gene ID** 135228**Other Names**

CPAMD7; CD109 antigen; 150 kDa TGF-beta-1-binding protein; C3 and PZP-like alpha-2-macroglobulin domain-containing protein 7; Platelet-specific Gov antigen; p180; r150; CD109

Target/Specificity

Recognizes endogenous levels of CD109 protein.

Dilution

WB~~WB (1/500 - 1/1000), IH (1/50 - 1/200)

IH~~WB (1/500 - 1/1000), IH (1/50 - 1/200)

Format

Liquid in 0.42% Potassium phosphate, 0.87% Sodium chloride, pH 7.3, 30% glycerol, and 0.09% (W/V) sodium azide.

Storage

Store at -20 °C. Stable for 12 months from date of receipt

Anti-CD109 Antibody - Protein Information**Name** CD109**Synonyms** CPAMD7**Function**

Modulates negatively TGFB1 signaling in keratinocytes.

Cellular Location

Cell membrane; Lipid-anchor, GPI-anchor

Tissue Location

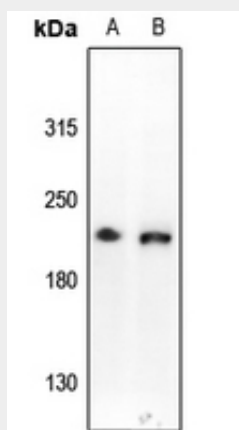
Widely expressed with high level in uterus, aorta, heart, lung, trachea, placenta and in fetal heart, kidney, liver, spleen and lung. Expressed by CD34(+) acute myeloid leukemia cell lines, T-cell lines, activated T-lymphoblasts, endothelial cells and activated platelets. Isoform 4 is expressed in placenta. Isoform 1 is expressed in keratinocytes and placenta.

Anti-CD109 Antibody - Protocols

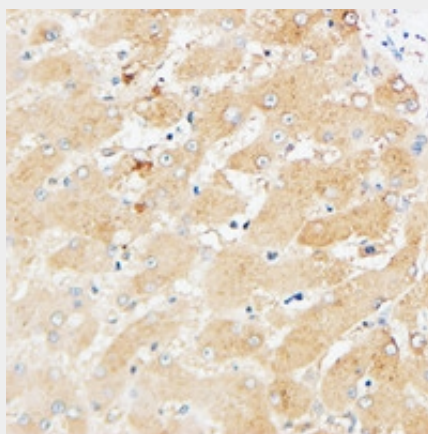
Provided below are standard protocols that you may find useful for product applications.

- [Western Blot](#)
- [Blocking Peptides](#)
- [Dot Blot](#)
- [Immunohistochemistry](#)
- [Immunofluorescence](#)
- [Immunoprecipitation](#)
- [Flow Cytometry](#)
- [Cell Culture](#)

Anti-CD109 Antibody - Images



Western blot analysis of CD109 expression in HepG2 (A), A549 (B) whole cell lysates.



Immunohistochemical analysis of CD109 staining in human liver formalin fixed paraffin embedded tissue section. The section was pre-treated using heat mediated antigen retrieval with sodium citrate buffer (pH 6.0). The section was then incubated with the antibody at room

temperature and detected using an HRP conjugated compact polymer system. DAB was used as the chromogen. The section was then counterstained with haematoxylin and mounted with DPX.

Anti-CD109 Antibody - Background

KLH-conjugated synthetic peptide encompassing a sequence within the center region of human CD109. The exact sequence is proprietary.