

Anti-ASK1 (pT838) Antibody
Rabbit polyclonal antibody to ASK1 (pT838)
Catalog # AP61258**Specification**

Anti-ASK1 (pT838) Antibody - Product Information

| | |
|-------------------|------------------------|
| Application | WB |
| Primary Accession | O99683 |
| Other Accession | O35099 |
| Reactivity | Human, Mouse |
| Host | Rabbit |
| Clonality | Polyclonal |
| Calculated MW | 154537 |

Anti-ASK1 (pT838) Antibody - Additional Information**Gene ID** 4217**Other Names**

ASK1; MAPKKK5; MEKK5; Mitogen-activated protein kinase kinase kinase 5; Apoptosis signal-regulating kinase 1; ASK-1; MAPK/ERK kinase kinase 5; MEK kinase 5; MEKK 5

Target/Specificity

Recognizes endogenous levels of ASK1 (pT838) protein.

Dilution

WB~~WB (1/500 - 1/1000)

Format

Liquid in 0.42% Potassium phosphate, 0.87% Sodium chloride, pH 7.3, 30% glycerol, and 0.09% (W/V) sodium azide.

Storage

Store at -20 °C. Stable for 12 months from date of receipt

Anti-ASK1 (pT838) Antibody - Protein Information**Name** MAP3K5**Synonyms** ASK1, MAPKKK5, MEKK5**Function**

Serine/threonine kinase which acts as an essential component of the MAP kinase signal transduction pathway. Plays an important role in the cascades of cellular responses evoked by changes in the environment. Mediates signaling for determination of cell fate such as differentiation and survival. Plays a crucial role in the apoptosis signal transduction pathway through mitochondria-dependent caspase activation. MAP3K5/ASK1 is required for the innate immune response, which is essential for host defense against a wide range of pathogens. Mediates

signal transduction of various stressors like oxidative stress as well as by receptor-mediated inflammatory signals, such as the tumor necrosis factor (TNF) or lipopolysaccharide (LPS). Once activated, acts as an upstream activator of the MKK/JNK signal transduction cascade and the p38 MAPK signal transduction cascade through the phosphorylation and activation of several MAP kinase kinases like MAP2K4/SEK1, MAP2K3/MKK3, MAP2K6/MKK6 and MAP2K7/MKK7. These MAP2Ks in turn activate p38 MAPKs and c-jun N-terminal kinases (JNKs). Both p38 MAPK and JNKs control the transcription factors activator protein-1 (AP-1).

Cellular Location

Cytoplasm. Endoplasmic reticulum. Note=Interaction with 14-3-3 proteins alters the distribution of MAP3K5/ASK1 and restricts it to the perinuclear endoplasmic reticulum region

Tissue Location

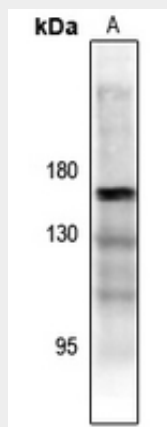
Abundantly expressed in heart and pancreas.

Anti-ASK1 (pT838) Antibody - Protocols

Provided below are standard protocols that you may find useful for product applications.

- [Western Blot](#)
- [Blocking Peptides](#)
- [Dot Blot](#)
- [Immunohistochemistry](#)
- [Immunofluorescence](#)
- [Immunoprecipitation](#)
- [Flow Cytometry](#)
- [Cell Culture](#)

Anti-ASK1 (pT838) Antibody - Images



Western blot analysis of ASK1 (pT838) expression in K562 (A) whole cell lysates.

Anti-ASK1 (pT838) Antibody - Background

KLH-conjugated synthetic peptide encompassing a sequence within the center region of human ASK1 (pT838). The exact sequence is proprietary.