

Anti-Caveolin 2 (pY27) Antibody
Rabbit polyclonal antibody to Caveolin 2 (pY27)
Catalog # AP61266

Specification

Anti-Caveolin 2 (pY27) Antibody - Product Information

Application	WB
Primary Accession	P51636
Other Accession	Q9WVC3
Reactivity	Human, Mouse, Rat
Host	Rabbit
Clonality	Polyclonal
Calculated MW	18291

Anti-Caveolin 2 (pY27) Antibody - Additional Information

Gene ID 858

Other Names

Caveolin-2

Target/Specificity

KLH-conjugated synthetic peptide encompassing a sequence within the N-term region of human Caveolin 2 (pY27). The exact sequence is proprietary.

Dilution

WB~~WB (1/500 - 1/1000)

Format

Liquid in 0.42% Potassium phosphate, 0.87% Sodium chloride, pH 7.3, 30% glycerol, and 0.09% (W/V) sodium azide.

Storage

Store at -20 °C. Stable for 12 months from date of receipt

Anti-Caveolin 2 (pY27) Antibody - Protein Information

Name CAV2

Function

May act as a scaffolding protein within caveolar membranes. Interacts directly with G-protein alpha subunits and can functionally regulate their activity. Acts as an accessory protein in conjunction with CAV1 in targeting to lipid rafts and driving caveolae formation. The Ser-36 phosphorylated form has a role in modulating mitosis in endothelial cells. Positive regulator of cellular mitogenesis of the MAPK signaling pathway. Required for the insulin-stimulated nuclear translocation and activation of MAPK1 and STAT3, and the subsequent regulation of cell cycle progression (By similarity).

Cellular Location

Nucleus. Cytoplasm. Golgi apparatus membrane; Peripheral membrane protein. Cell membrane; Peripheral membrane protein. Membrane, caveola; Peripheral membrane protein. Note=Potential hairpin-like structure in the membrane. Membrane protein of caveolae Tyr-19-phosphorylated form is enriched at sites of cell-cell contact and is translocated to the nucleus in complex with MAPK1 in response to insulin (By similarity). Tyr-27-phosphorylated form is located both in the cytoplasm and plasma membrane. CAV1-mediated Ser-23-phosphorylated form locates to the plasma membrane. Ser-36-phosphorylated form resides in intracellular compartments.

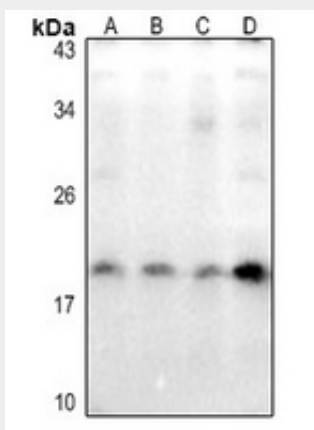
Tissue Location

Expressed in endothelial cells, smooth muscle cells, skeletal myoblasts and fibroblasts

Anti-Caveolin 2 (pY27) Antibody - Protocols

Provided below are standard protocols that you may find useful for product applications.

- [Western Blot](#)
- [Blocking Peptides](#)
- [Dot Blot](#)
- [Immunohistochemistry](#)
- [Immunofluorescence](#)
- [Immunoprecipitation](#)
- [Flow Cytometry](#)
- [Cell Culture](#)

Anti-Caveolin 2 (pY27) Antibody - Images

Western blot analysis of Caveolin 2 (pY27) expression in A2780 (A), H1792 (B), PC12 (C), AML12 (D) whole cell lysates.

Anti-Caveolin 2 (pY27) Antibody - Background

KLH-conjugated synthetic peptide encompassing a sequence within the N-term region of human Caveolin 2 (pY27). The exact sequence is proprietary.