

**Anti-RRN3 (pS649) Antibody**  
**Rabbit polyclonal antibody to RRN3 (pS649)**  
**Catalog # AP61275****Specification**

---

**Anti-RRN3 (pS649) Antibody - Product Information**

Application	WB, IHC
Primary Accession	<a href="#">Q9NYV6</a>
Reactivity	Human
Host	Rabbit
Clonality	Polyclonal
Calculated MW	74107

**Anti-RRN3 (pS649) Antibody - Additional Information****Gene ID** 54700**Other Names**

TIFIA; RNA polymerase I-specific transcription initiation factor RRN3; Transcription initiation factor IA; TIF-IA

**Target/Specificity**

KLH-conjugated synthetic peptide encompassing a sequence within the C-term region of human RRN3 (pS649). The exact sequence is proprietary.

**Dilution**

WB~~WB (1/500 - 1/1000), IH (1/50 - 1/200)

IHC~~1:100~500

**Format**

Liquid in 0.42% Potassium phosphate, 0.87% Sodium chloride, pH 7.3, 30% glycerol, and 0.09% (W/V) sodium azide.

**Storage**

Store at -20 °C. Stable for 12 months from date of receipt

**Anti-RRN3 (pS649) Antibody - Protein Information****Name** RRN3**Synonyms** TIFIA**Function**

Required for efficient transcription initiation by RNA polymerase I (Pol I). Required for the formation of the competent pre- initiation complex (PIC).

**Cellular Location**

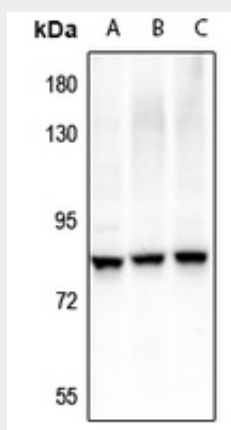
Nucleus, nucleolus.

## Anti-RRN3 (pS649) Antibody - Protocols

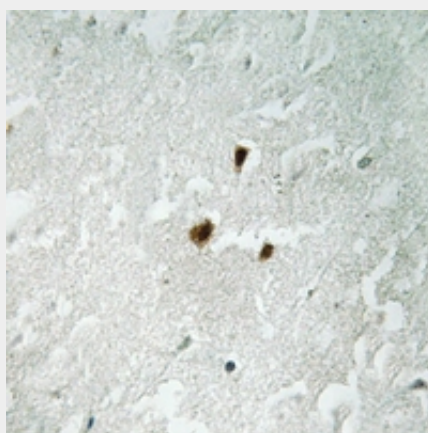
Provided below are standard protocols that you may find useful for product applications.

- [Western Blot](#)
- [Blocking Peptides](#)
- [Dot Blot](#)
- [Immunohistochemistry](#)
- [Immunofluorescence](#)
- [Immunoprecipitation](#)
- [Flow Cytometry](#)
- [Cell Culture](#)

## Anti-RRN3 (pS649) Antibody - Images



Western blot analysis of RRN3 (pS649) expression in A375 (A), EC9706 (B), SGC7901 (C) whole cell lysates.



Immunohistochemical analysis of RRN3 (pS649) staining in human brain formalin fixed paraffin embedded tissue section. The section was pre-treated using heat mediated antigen retrieval with sodium citrate buffer (pH 6.0). The section was then incubated with the antibody at room temperature and detected using an HRP conjugated compact polymer system. DAB was used as the chromogen. The section was then counterstained with haematoxylin and mounted with DPX.

## Anti-RRN3 (pS649) Antibody - Background

KLH-conjugated synthetic peptide encompassing a sequence within the C-term region of human

RRN3 (pS649). The exact sequence is proprietary.